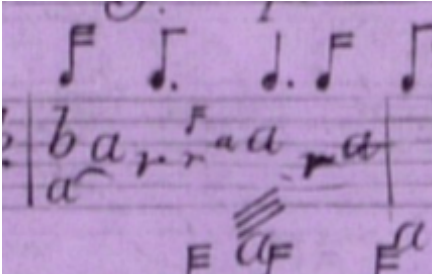


Tutorial: How to get special grace note

With Falckenhagen, Hagen and other composers there are sometimes grace notes and other things, that need some tricks to get notated them in django.

Here is an example by Falckenhagen, Op. I, Sonata VI, 1. Largo, m. 22



You see, that the grace notes are drawn in a smaller size with an extra flag, that also is smaller, and also in a lower position, near the tab signs.

To get a similar display in django, you first need to expand the measure, that is in this case 3/4. You have to right-click on the bar before the grace notes and insert a time sign with 7/8, that we don't want to be displayed. It is good to include the original time sign on the bar after the measure with the grace notes.

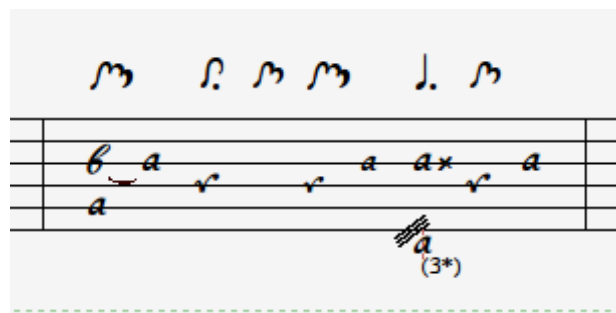
Then you can insert the two grace notes, first in correct rhythm.

You now can make the tab letters small, by using the little brown tab letter in the phrasing toolbox.

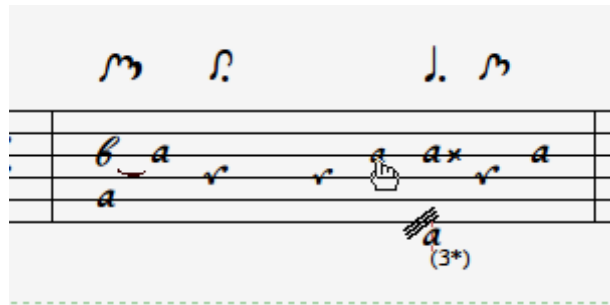


The problem now is, that the flag of the grace notes is like the other flags and therefore the measure doesn't look correctly – it is more than 3 fourth in summing it up.

To get the grace notes nearer to the main note and also more narrow, we insert a 1/16th pause before the grace notes and reflag them with 32th (you could even do that with a punctated 1/16th and two 64th, as in the next step we will hide the real flags of the grace notes and add a special flag).



Now we have to hide these tab flags (in the chords-toolbox).
The result can be seen here:

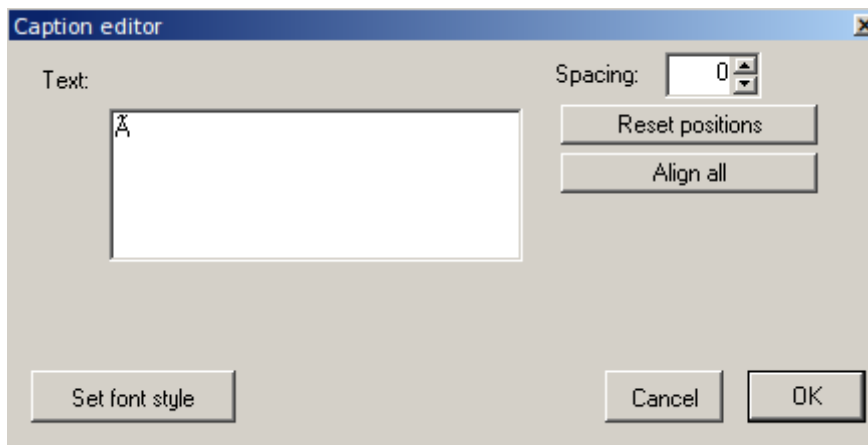


To have a smaller flag for the grace notes, that we can position as we like, we use the meta-event text caption.

Right-click on the first grace note, and use „insert - caption text“

In the dialogue you have to copy the correct sign. Easiest you can copy it from a word programm in order to have the correct flag, probably you also can copy it from this pdf (copy or CTRL-C and CTRL-V).

It is important also to adjust in „set font style“ the font (DjangoTabU) and the font size (in the example I used 14)



Here is the
„Set font style“-dialogue



Now you will see the flag above the tab sign and with the mouse you can drag it, where you want to have it. The result now looks similar to the original Falckenhagen print, perhaps even better because of the proportional spaces.



Return the notation to C