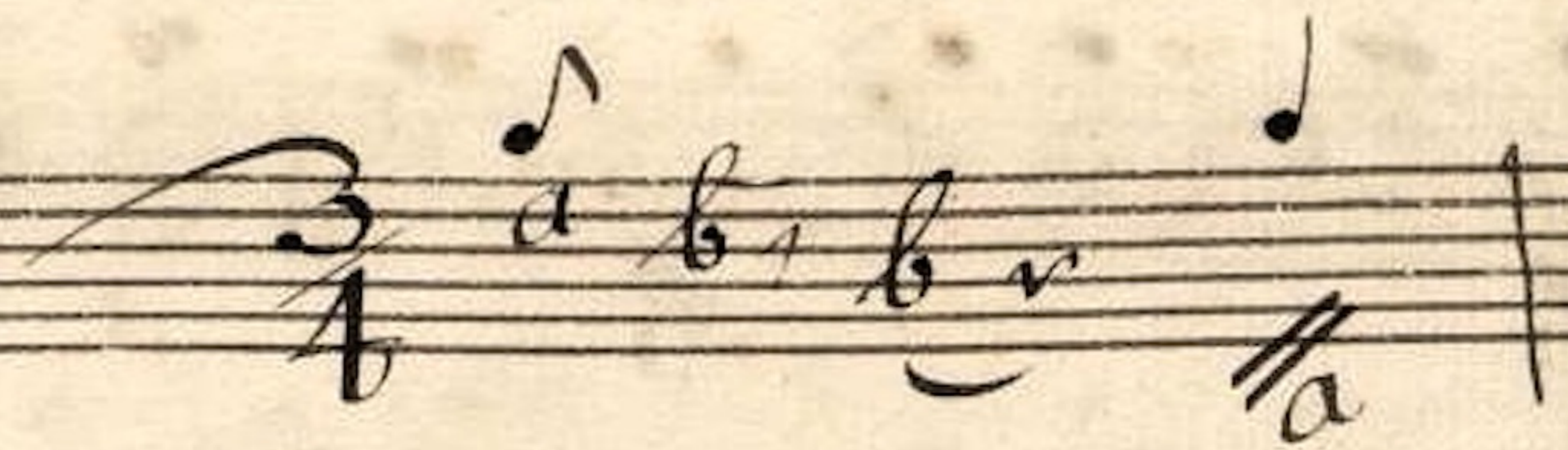


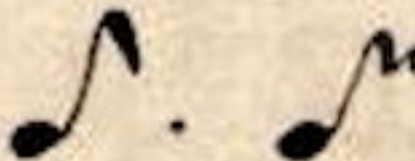


a

4.)

Sarabande

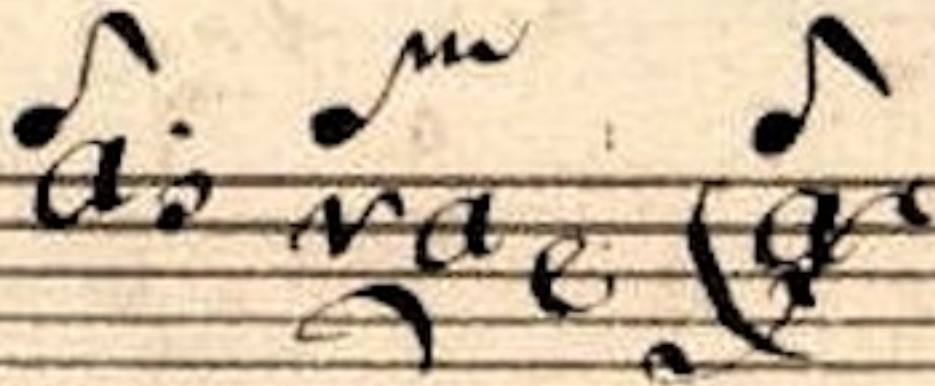




A's A



G *F* *F*



A handwritten musical score on a five-line staff. The notation is written in a cursive, calligraphic style. It features several notes with stems and beams, and some notes with dots above them. The notes are arranged in a sequence across the staff, with some notes extending above the top line and others below the bottom line. The ink is dark, and the paper is aged and yellowed.