

18th Century Irish Tunes

by
Turlough O'Carolan



Table of Contents

1. <i>Planxty Fanny Powers</i>	p. 1
2. <i>Planxty Irwin</i>	
3. <i>Sheebeg Sheemore</i>	p. 2
4. <i>O'Carolan's Concerto</i>	
5. <i>Loftus Jones</i>	p. 3
6. <i>O'Carolan's Ramble to Cashel</i>	p. 4
7. <i>Morgan Megan</i>	p. 5
8. <i>Blind Mary</i>	
9. <i>Planxty Irwin</i>	p. 6
10. <i>Hewlett</i>	
11. <i>O'Carolan's Draught</i>	p. 7
12. <i>Princess Royal</i>	
13. <i>Charles O'Connor</i>	p. 8
14. <i>Lord Inchiquin</i>	
15. <i>Planxty George Brabazon</i>	p. 9
16. <i>O'Carolan's Quarrel with the Landlady</i>	

Planxty Fanny Powers
Fanny Powers
Turlough O'Carolan (1670-1738)



Musical score for *Planxty Fanny Powers* by Turlough O'Carolan. The score is written in treble clef with a key signature of one sharp (F#) and a common time signature (C). It consists of four staves of music. The first staff begins with a treble clef and a sharp sign. The second staff is marked with the number 12. The third staff is marked with the number 21. The fourth staff is marked with the number 29 and ends with a double bar line.

Planxty Irwin
Turlough O'Carolan (1670-1738)



Musical score for *Planxty Irwin* by Turlough O'Carolan. The score is written in treble clef with a key signature of one sharp (F#) and a common time signature (C). It consists of four staves of music. The first staff begins with a treble clef and a sharp sign. The second staff is marked with the number 9. The third staff is marked with the number 17. The fourth staff is marked with the number 26 and ends with a double bar line.

Sheebeg Sheemore
S'i Beag S'i M'or
Turlough O'Carolan (1670-1738)



Musical score for *Sheebeg Sheemore* by Turlough O'Carolan. The score is written in treble clef with a key signature of two sharps (F# and C#). It consists of four staves of music. The first staff begins with a treble clef and a key signature of two sharps. The second staff is marked with a '9' at the beginning. The third staff is marked with a '17' at the beginning. The fourth staff is marked with a '26' at the beginning and ends with a double bar line.

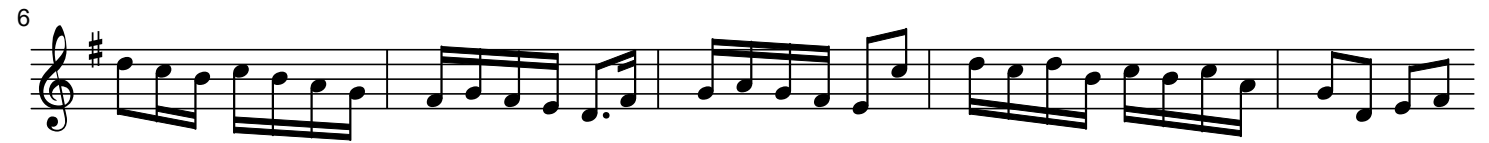
O'Carolan's Concerto
Mrs. Power
Turlough O'Carolan (1670-1738)

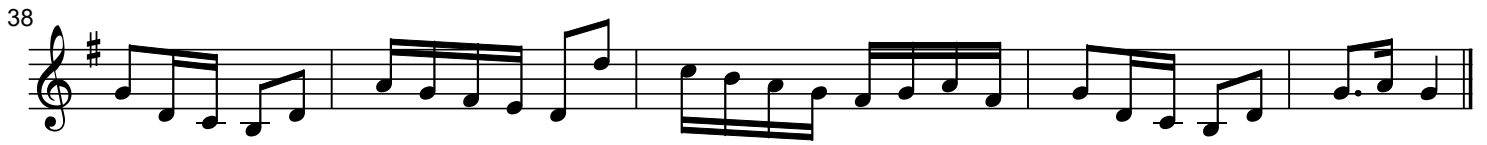


Musical score for *O'Carolan's Concerto* by Turlough O'Carolan. The score is written in treble clef with a key signature of two sharps (F# and C#). It consists of five staves of music. The first staff begins with a treble clef and a key signature of two sharps. The second staff is marked with a '10' at the beginning. The third staff is marked with a '17' at the beginning. The fourth staff is marked with a '24' at the beginning. The fifth staff is marked with a '32' at the beginning and ends with a double bar line.



Loftus Jones
Turlough O'Carolan (1670-1738)





O'Carolan's Ramble to Cashel
Turlough O'Carolan (1670-1738)



Morgan Megan
Morgan Magan
Turlough O'Carolan (1670-1738)



5

10

15

20

25

29

This block contains the first system of musical notation for the piece 'Blind Mary'. It consists of six staves of music, each starting with a measure number: 5, 10, 15, 20, 25, and 29. The music is written in a single treble clef with a key signature of one sharp (F#). The notation includes various note values such as quarter, eighth, and sixteenth notes, as well as rests and bar lines. The piece concludes with a double bar line at the end of the 29th measure.

Blind Mary
Turlough O'Carolan (1670-1738)

6

11

This block contains the second system of musical notation for the piece 'Blind Mary'. It consists of three staves of music, each starting with a measure number: 6, 11, and 11. The music continues in the same treble clef and key signature of one sharp (F#). The notation includes various note values such as quarter, eighth, and sixteenth notes, as well as rests and bar lines. The piece concludes with a double bar line at the end of the 11th measure of this system.

Planxty Irwin
Turlough O'Carolan (1670-1738)



Musical notation for *Planxty Irwin* in G major (one sharp). The piece consists of 10 measures. The notation is written on a single treble clef staff. The melody begins with a quarter note G4, followed by a quarter note A4, and then a series of eighth and sixteenth notes. The piece concludes with a double bar line.

Hewlett
Planxty Hewlett
Turlough O'Carolan (1670-1738)

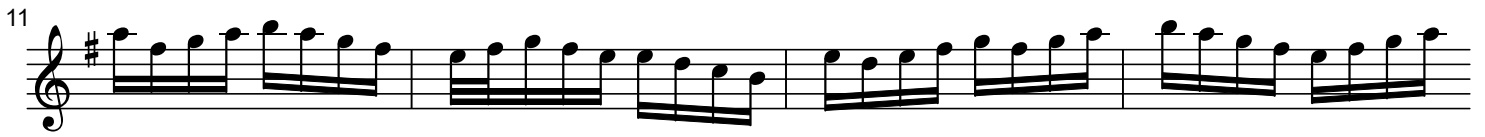
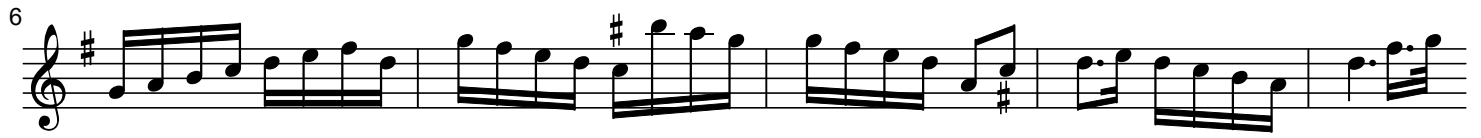


Musical notation for *Hewlett* in G major (one sharp). The piece consists of 18 measures. The notation is written on a single treble clef staff. The melody is characterized by a steady eighth-note rhythm. The piece concludes with a double bar line.

O'Carolan's Draught
Turlough O'Carolan (1670-1738)



Musical notation for *O'Carolan's Draught* in G major (one sharp). The notation is written on a single treble clef staff. The piece features a complex, rhythmic melody with many beamed eighth and sixteenth notes. The piece concludes with a double bar line.



Princess Royal
Turlough O'Carolan (1670-1738)



Charles O'Connor
Turlough O'Carolan (1670-1738)

10

20

29

38

Lord Inchiquin
Turlough O'Carolan (1670-1738)

8

17

24