

W.M. CAHUSACS ANNUAL COLLECTION OF
TWENTY-FOUR FAVORITE COUNTRY DANCES
FOR THE YEAR 1809

With proper directions for each Dance,
as they are performed at Court, Bath,
and all Public Assemblies



London, Printed for W.M. Cahusac,
Musical instrument maker, 196 Strand
[1809]

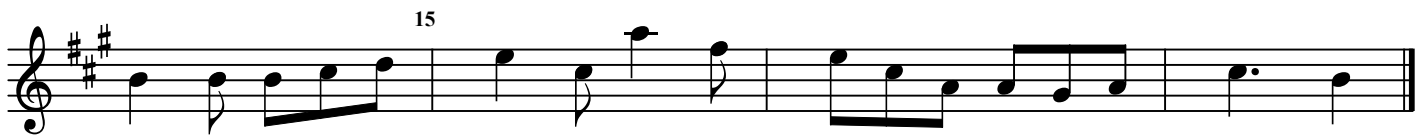
Table of Contents

1. Major (or Miss) Spicer	_____	p. 1
2. Time's A Tell Tale		
3. Morgiana	_____	p. 2
4. The Fairy Dance		
5. The Labyrinth	_____	p. 3
6. The Shaddle		
7. The Woodcutter	_____	p. 4
8. The Mariners Departure		
9. The Runaway	_____	p. 5
10. Egerton! For Ever!		
11. Sir Arthur Wellesly's Dash.	_____	p. 6
12. The Ephemeral Emperor		
13. Marchioness Of Tavistock's Waltz	_____	p. 7
14. Smash The Windows	_____	p. 8
15. The Devonshire Go		
16. Kinnegad Slashers	_____	p. 9
17. Sir Charles Cotton's Hornpipe		
18. The Spanish Patriots	_____	p. 10
19. Miss Hutton's Reel		
20. Lady Ann Stewart's Reel	_____	p. 11
21. The Buds Of May		
22. The Banquet Of Fancy	_____	p. 12
23. The Fairy Prince		
24. Boney In The Dumps	_____	p. 13

1. Major (or Miss) Spicer



Original in PDF format : <http://en.instr.scorser.com/D/351863.html>



Hands across, back again, Down the mid: up again, turn corners, and lead outsides

2. Time's A Tell Tale



Set and hands 3 round, back again, Down the mid: up again, and Allemande.

3. Morgiana

Musical score for '3. Morgiana' in 6/8 time, key of B-flat major. The score consists of five staves of music. The first staff starts with a treble clef, a key signature of one flat, and a 6/8 time signature. The music features a mix of eighth and sixteenth notes, often beamed together, with some notes marked with a pink highlight. Measure numbers 5, 10, 15, and 20 are indicated above the staves.

1st Lady change places with 2d Gent.: 1st Gent: do the same with 2d. Lady, Pousettes, and Right and left.

4. The Fairy Dance

Musical score for '4. The Fairy Dance' in 2/4 time, key of D major. The score consists of two staves of music. The first staff starts with a treble clef, a key signature of two sharps, and a 2/4 time signature. The music features eighth and sixteenth notes, often beamed together, with some notes marked with a pink highlight. Measure numbers 5, 10, and 15 are indicated above the staves.

Change sides, back again, Down the mid: up again, hand 4 and Allemande.

5. The Labyrinth

Musical score for 'The Labyrinth' in treble clef, key of D major (one sharp), and 6/8 time. The score consists of three staves. The first staff contains measures 1 through 5. The second staff contains measures 6 through 10, with a repeat sign at the end of measure 9. The third staff contains measures 11 through 15, with a repeat sign at the end of measure 14. Several notes in the score are highlighted in pink.

1st and 2d Cu: set and change sides, back again, Down the mid:: up again, hands 4 round.

6. The Shaddle

Musical score for 'The Shaddle' in treble clef, key of D major (one sharp), and 6/8 time. The score consists of four staves. The first staff contains measures 1 through 4. The second staff contains measures 5 through 9, with a repeat sign at the end of measure 8. The third staff contains measures 10 through 14. The fourth staff contains measures 15 through 18. A fermata is placed over the final note of measure 9.

Set and half right and left, back again, Down the mid: up again, and Pousette.

7. The Woodcutter

Musical score for 'The Woodcutter' in G major (one sharp) and 2/4 time. The score consists of five staves of music. The first staff begins with a treble clef, a key signature of one sharp (F#), and a 2/4 time signature. The music is a continuous eighth-note melody. A measure number '5' is placed above the second staff. A first ending bracket labeled '(1*)' spans the final two measures of the third staff. A measure number '10' is placed to the left of the start of the fourth staff. A second ending bracket labeled '(2*)' spans the final two measures of the fifth staff, which ends with a double bar line and repeat dots.

Lead outsiders, back again, Down the mid: up again hands 4 and Right and left.

8. The Mariners Departure

Musical score for 'The Mariners Departure' in G major (one sharp) and common time (C). The score consists of two staves of music. The first staff begins with a treble clef, a key signature of one sharp (F#), and a common time signature (C). The music is a melody of quarter and eighth notes. A measure number '5' is placed to the left of the start of the second staff. The piece concludes with a double bar line and repeat dots.

Cast off 1 Cu: up again, Down the mid: up again, foot it and hand 4.

1. 1/4 note in original
 2. 1/4 note in original, second ending

9. The Runaway

Lead twice down the mid: up again, Pousette and Right and left.

10. Egerton! For Ever!

Hands 3 round, back again, Down the mid: up again, cast off, and foot it outsides.

11. Sir Arthur Wellesly's Dash.

A Waltz.

Musical score for 'Sir Arthur Wellesly's Dash' in 3/4 time, key of D major. The score consists of four staves of music. The first staff begins with a treble clef, a key signature of one sharp (F#), and a 3/4 time signature. A pink double-flare ornament is placed above the first measure. Measure numbers 5, 10, 15, and 20 are indicated above the staves. The piece concludes with a double bar line and repeat dots.

Set and change sides, back again, Down the mid: up again, Allemande, and Swing Corners.

12. The Ephemeral Emperor

Musical score for 'The Ephemeral Emperor' in 2/4 time, key of D major. The score consists of three staves of music. The first staff begins with a treble clef, a key signature of two sharps (F# and C#), and a 2/4 time signature. Measure numbers 5 and 10 are indicated above the staves. The piece concludes with a double bar line and repeat dots.



Hands 4 round, back again, Down the mid: up again, foot it, Right and left.

13. Marchioness Of Tavistock's Waltz



Hey on your sides, then contrary sides, Down the mid: up again, Pousette.

14. Smash The Windows



Half right and left, back again, hands 4 round, back again, and Allemande.

15. The Devonshire Go

Turn your Partner and cast off, half right and left, Down the mid: up again, Pousette.

16. Kinnegad Slashers

Musical score for 'Allemande' in G major, 3/4 time. The score consists of three staves of music. The first staff begins with a treble clef, a key signature of one sharp (F#), and a common time signature. The melody starts on the fifth measure (labeled '5'). The second staff continues the melody, with a measure marker '10' above the first measure. The third staff continues the melody, with a measure marker '15' above the first measure. The piece concludes with a double bar line and repeat dots.

Whole figure at top, Down the mid: up again, Allemande.

17. Sir Charles Cotton's Hornpipe

Musical score for 'Sir Charles Cotton's Hornpipe' in G major, 2/4 time. The score consists of three staves of music. The first staff begins with a treble clef, a key signature of one sharp (F#), and a common time signature. The melody starts on the fifth measure (labeled '5'). The second staff continues the melody, with a measure marker '10' above the first measure. The third staff continues the melody, with a measure marker '15' above the first measure. The piece concludes with a double bar line and repeat dots.

Hands 6 quite round, back again, Down the mid: up again, Promenade and Pousette.

18. The Spanish Patriots

Musical notation for 'The Spanish Patriots' in 2/4 time. The first staff shows a continuous eighth-note melody. The second staff begins with a measure containing a fermata over a note with a '5' below it, followed by a repeat sign. The piece concludes with a double bar line and a fermata, with the instruction 'D.C.' written above the final measure.

Hands 3 on the Lady's side, same on Gent.s side, Down the mid: up again, Allemande.

19. Miss Hutton's Reel

Musical notation for 'Miss Hutton's Reel' in 2/4 time with a key signature of one sharp (F#). The notation is spread across four staves. The first staff contains the first four measures. The second staff starts with a measure number '5' and contains measures 5 through 8. The third staff starts with a measure number '7' and contains measures 7 through 10, with a measure number '10' placed above the eighth measure. The fourth staff contains the final two measures of the piece.

Hands 4 back again, Down the mid: up again, Swing corners.

20. Lady Ann Stewart's Reel

Musical score for 'Lady Ann Stewart's Reel' in G major (one sharp) and 2/4 time. The score consists of four staves of music. The first staff begins with a treble clef and a key signature of one sharp. The second staff has a measure rest of 5 measures. The third staff has a measure rest of 10 measures. The fourth staff concludes the piece with a double bar line and repeat dots.

Cast off, Down the mid: up again, hands 4 round, Swing corners, and foot it outside.

21. The Buds Of May

Musical score for 'The Buds Of May' in G major (one sharp) and 2/4 time. The score consists of three staves of music. The first staff begins with a treble clef, a key signature of one sharp, and a time signature of 2/4. The second staff has a measure rest of 10 measures. The third staff has a measure rest of 15 measures. The score concludes with a double bar line and repeat dots.

Hand 3 with 2d. Lady, same with 2d. Gent: Down the mid: up again, Right and left.

22. The Banquet Of Fancy

Musical score for 'The Banquet Of Fancy' in G minor, 3/8 time. The score consists of four staves of music. The first staff begins with a treble clef, a key signature of one flat (B-flat), and a 3/8 time signature. The melody is written in a single line. The second staff starts with a measure number '5' above the first measure. The third staff starts with a measure number '10' above the first measure. The fourth staff starts with a measure number '15' above the first measure. The piece concludes with a double bar line and a fermata over the final note, with the word 'Fine' written below the staff.

D.C.

1st lady set to 2d Gent. and turn round with both hands, 1st Gent: do the same, Pousette, and Right and left.

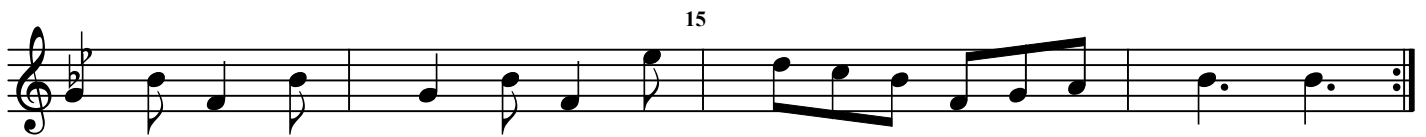
23. The Fairy Prince

Musical score for 'The Fairy Prince' in G minor, 9/8 time. The score consists of three staves of music. The first staff begins with a treble clef, a key signature of one flat (B-flat), and a 9/8 time signature. The melody is written in a single line. The second staff starts with a measure number '5' above the first measure. The third staff continues the melody. The piece concludes with a double bar line and a fermata over the final note.



Sett and hands across, back again, Down the mid: up again, hands 4 half round, right and left.

24. Boney In The Dumps



Lead outsides back again Down the mid: up again, Right and left.

