

15 easy duets for viols

August Kühnel? (1645-~1700)

Kassel library, Israel Anhang 28

Viol II

Regular notation



Edited by Alain Veylit

Serenata

K fol.17v-18r

August Kühnel?

Musical score for Serenata, measures 1-16. The score is written in bass clef with a key signature of two flats (B-flat and E-flat) and a common time signature (C). The music consists of five staves of notation. Measure 12 includes the instruction *piano.* The piece concludes with a double bar line and repeat dots at the end of measure 16.

Aria

K. fol. 18v-19r

August Kühnel?

Musical score for Aria, measures 1-9. The score is written in bass clef with a key signature of two flats (B-flat and E-flat) and a 3/4 time signature. The music consists of two staves of notation. The piece concludes with a double bar line and repeat dots at the end of measure 9.

Gavotte

K fol.19v-20r

August Kühnel?



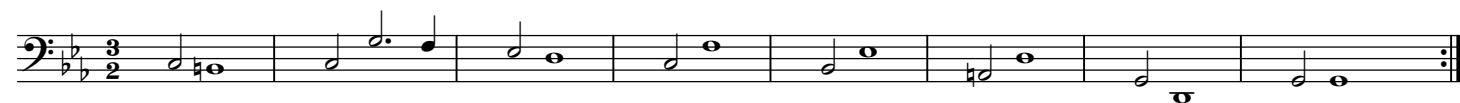
7



Sarab.

K fol.20v-21r

August Kühnel?



9



Echo (1)

K.fol.5v-6r

August Kühnel?

Echo

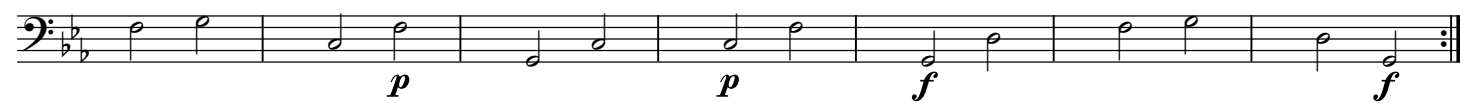


8



16

(1*)



1. This second part ends abruptly, missing 5 bars supplied here by the editor.

Echo (2)

K.fol.6v-7r

August Kühnel?

9

17

25

f *p* *f* *p* *f* *p*

f *p* *f* *p* *f*

p *f* *p* *f*

p *f* *p*

Gavott:

K.fol.21v-22r

August Kühnel?

5

9

fort: *piano.* *for:*

pian: *fort:*

pian: *fort:*

Sarab:

K.fol.22v-23r

August Kühnel?

Musical score for Sarab, measures 1-18. The score is written in bass clef with a 3/2 time signature. It features dynamic markings: *fort:* (measures 1-6), *pian:* (measures 7-10), *fort:* (measures 11-14), and *pian:* (measures 15-18). The piece concludes with a fermata over the final measure.

Gique

K.fol.23v-24r

August Kühnel?

Musical score for Gique, measures 1-22. The score is written in bass clef with a 3/4 time signature. It features dynamic markings: *fort:* (measures 1-11) and *p.* (measures 12-22). The piece concludes with a fermata over the final measure.

Sarab:

K.fol.24v-25r

August Kühnel?

Musical score for Sarab, measures 1-10. The score is written in bass clef with a 3/2 time signature. It concludes with a fermata over the final measure.

Gavott:

K.fol.25v-26r

August Kühnel?



Praelud:

K.fol.26v-27r

August Kühnel?



Allemand:

K.fol.27v-28r

August Kühnel?



Cour:

K.fol.28v-29r

August Kühnel?

