



65

70



75



80



85



90



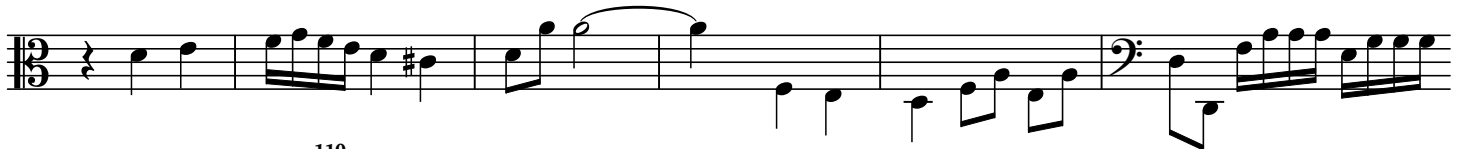
95



100



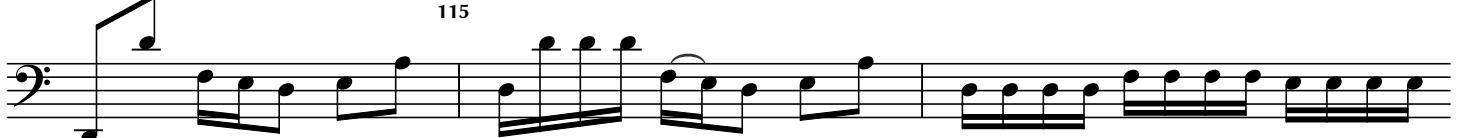
105



110



115



120

125

130

135

140

145

150

155

160



165



170

175

180



185



190



195



200



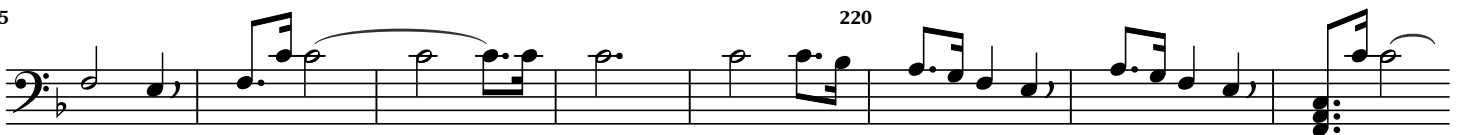
205



210



215



220



230

*f*

235

*p* *f* *f*

240

*p* *f*

245

*p* *f* *p*

250

255

260

265

270

275

*f*

280

Detailed description: This page of a musical score is written for a bass clef instrument. It contains ten staves of music, numbered from 230 to 285. The notation includes various rhythmic values, slurs, and dynamic markings such as *p* (piano) and *f* (forte). There are several triplet markings (indicated by a '3' over a group of notes) and a key signature change to one sharp (F#) at measure 255. The music features complex rhythmic patterns, including sixteenth and thirty-second notes, and rests.

*p*

*f*

285

*p*

*f* 3 3 3 3 3 3

*p*

290

*f*

295 *Pointe*

300

300