

[fol. 291r]

Concerto
à
Sue Liuti Obligati
&
Basso.



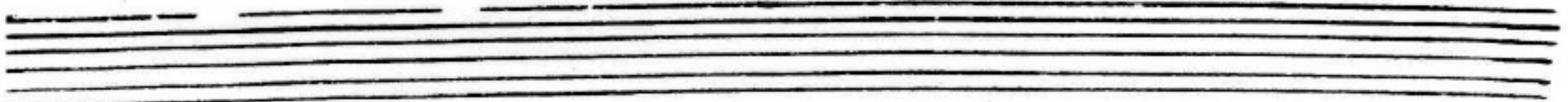
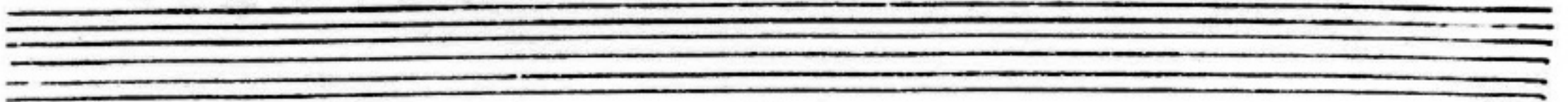
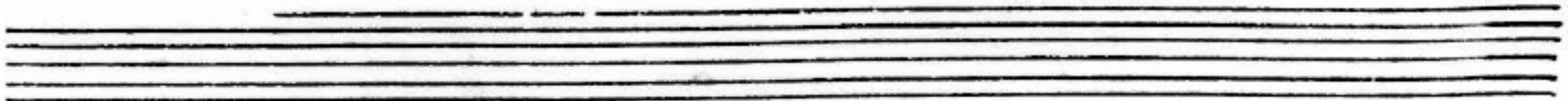
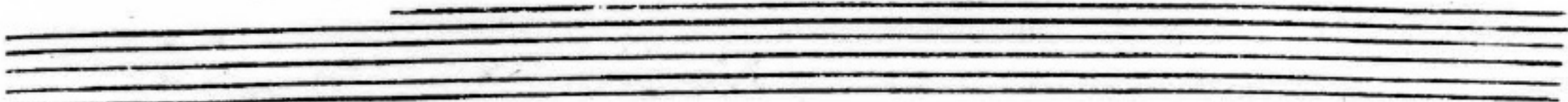
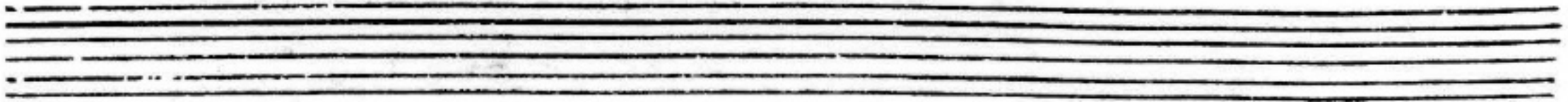
Corigniani.

Liuto. 1.

Introduzione
allegro.

This is a handwritten musical score for a lute, consisting of ten staves. The notation is in a historical style, likely from the 16th or 17th century. The score begins with a treble clef and a 3/4 time signature. The music is written in a single system, with various note values including minims, crotchets, and quavers. There are several rests and dynamic markings throughout. The piece concludes with a double bar line and repeat signs. The handwriting is clear and legible, with some decorative flourishes in the notation.

Handwritten musical notation on three staves. The notation includes notes, rests, and lyrics. The lyrics are "baba" and "nanab". The music is written in a style that appears to be a form of musical shorthand or a specific dialect. The first staff has a treble clef and a key signature of one flat. The second and third staves have a common time signature. The music ends with a double bar line and repeat signs.



Allabreve. Lib. 1.

The image shows a handwritten musical score for a piece titled "Allabreve." The score is written on a single staff with a 4/4 time signature. The music consists of a single melodic line with various notes, rests, and accidentals. The notes are mostly quarter and eighth notes, with some sixteenth notes. The key signature is one flat (B-flat). The score is written in a cursive, handwritten style. The word "Allabreve." is written at the beginning of the first staff, and "Lib. 1." is written at the top right. The music is written on a single staff with a 4/4 time signature. The notes are mostly quarter and eighth notes, with some sixteenth notes. The key signature is one flat (B-flat). The score is written in a cursive, handwritten style. The word "Allabreve." is written at the beginning of the first staff, and "Lib. 1." is written at the top right. The music is written on a single staff with a 4/4 time signature. The notes are mostly quarter and eighth notes, with some sixteenth notes. The key signature is one flat (B-flat). The score is written in a cursive, handwritten style. The word "Allabreve." is written at the beginning of the first staff, and "Lib. 1." is written at the top right.

Handwritten musical notation on three staves. The first two staves contain a melody with various notes and rests. The third staff ends with a double bar line and the word "Fin." written in cursive.

Five empty musical staves.

Liuto. 2.

Introduzione
allegro.

This page contains a handwritten musical score for a lute, titled "Liuto. 2." and "Introduzione allegro." The score is written on ten staves. The first staff begins with a treble clef and a 4/4 time signature. The music consists of a series of rhythmic patterns, including eighth and sixteenth notes, often beamed together. There are several instances of accidentals, including flats and naturals, scattered throughout the piece. The notation is dense and characteristic of early modern manuscript notation. The piece concludes with a double bar line on the tenth staff.

Alliegretto

A handwritten musical score for a piece titled "Alliegretto". The score is written on ten staves. The first staff begins with a treble clef, a 4/4 time signature, and a key signature of one flat (B-flat). The music is written in a single melodic line with various note values, including eighth and sixteenth notes, and rests. The notation includes many accidentals (sharps, flats, naturals) and some slurs. The piece concludes with a double bar line and repeat dots. Below the main score, there are several empty staves, and at the bottom left, there is a small, partially written musical fragment.

Adagio

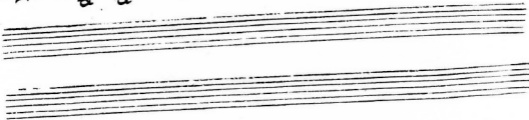
Handwritten musical score for a piece marked *Adagio*. The score consists of 11 staves of music. The first staff begins with a treble clef, a common time signature (C), and a key signature of three flats (B-flat, E-flat, A-flat). The notation includes various note values (quarter, eighth, sixteenth notes), rests, and accidentals. The music is written in a cursive, handwritten style. The piece concludes with a double bar line and a repeat sign. The final notes are "4 5 4" followed by a series of notes under a slur.

Colti.

Allabreve.

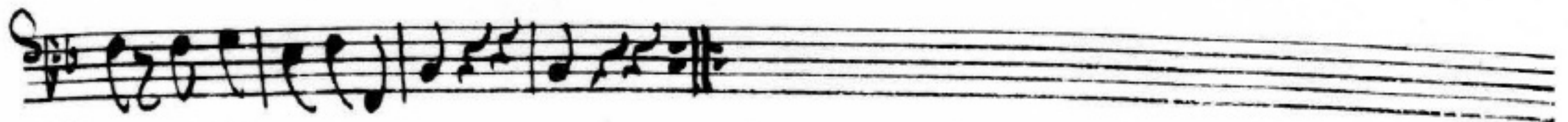
A handwritten musical score for a piece in Allabreve time. The score consists of ten staves of music. The first staff begins with a treble clef, a key signature of one flat (B-flat), and a 5/4 time signature. The music is written in a cursive, handwritten style. The notes are primarily quarter and eighth notes, with some rests. The piece concludes with a double bar line and a repeat sign. The handwriting is somewhat dense and expressive, typical of a composer's sketch or a personal manuscript.

Handwritten musical notation on three staves. The top staff contains a melody with notes and rests. The middle staff contains a bass line with notes and rests. The bottom staff contains a few notes and rests, ending with a double bar line and the word "Fin".



Basso.

Allegro.



A handwritten musical score consisting of eight staves. The notation is dense and includes various rhythmic values, accidentals, and dynamic markings. The first staff begins with a treble clef and a key signature of one sharp (F#). The second staff has a treble clef and a key signature of one flat (Bb). The third staff has a treble clef and a key signature of one flat (Bb). The fourth staff is marked 'Allegretto' and has a treble clef with a key signature of one flat (Bb). The fifth staff has a treble clef and a key signature of one flat (Bb). The sixth staff has a treble clef and a key signature of one flat (Bb). The seventh staff has a treble clef and a key signature of one flat (Bb). The eighth staff has a treble clef and a key signature of one flat (Bb). The notation includes many sixteenth and thirty-second notes, often beamed together. There are also some larger notes and rests. The handwriting is in black ink on aged paper.

Allabré

A handwritten musical score consisting of seven staves. The first staff begins with the tempo marking *Allabré* and a treble clef. The music is written in a 2/4 time signature with a key signature of one flat (B-flat). The notation includes various rhythmic values such as eighth and sixteenth notes, as well as rests. The second staff continues the melody with similar rhythmic patterns. The third and fourth staves show a more complex rhythmic structure with frequent sixteenth notes. The fifth and sixth staves feature a mix of eighth and quarter notes. The seventh staff concludes the piece with a double bar line and the word *Fine* written in a decorative, cursive script.

