

74
A moll
S^c O N A T L

per il
Liuto Solo,

ed
Sig. Paulo Carlo Durant.



Liuto Solo

Fantasia

The first staff of music begins with a treble clef and a common time signature (C). The melody consists of quarter and eighth notes. Below the staff, the numbers 6, 5, and 4 are written, likely indicating fret positions for the lute.

The second staff continues the melody with quarter and eighth notes. Below the staff, the numbers 6, 5, and 4 are written, indicating fret positions.

The third staff features a more complex melody with quarter and eighth notes. Below the staff, the numbers 4, 5, and 6 are written, indicating fret positions.

The fourth staff continues the melody with quarter and eighth notes. Below the staff, the numbers 6, 5, and 4 are written, indicating fret positions.

The fifth staff features a melody with quarter and eighth notes. Below the staff, the numbers 6, 5, and 4 are written, indicating fret positions.

The sixth staff contains a complex, fast-moving passage with many sixteenth notes. Below the staff, the numbers 6, 5, and 4 are written, indicating fret positions.

The seventh staff continues the melody with quarter and eighth notes. Below the staff, the numbers 6, 5, and 4 are written, indicating fret positions.

The eighth staff features a melody with quarter and eighth notes. Below the staff, the numbers 4, 4, and 6 are written, indicating fret positions.

Handwritten musical notation on a five-line staff. The top line contains rhythmic flags and rests. The bottom line contains a sequence of notes: a, a, a, a, a, a, a, a, a, a, a, a.

Handwritten musical notation on a five-line staff. The top line contains rhythmic flags and rests. The bottom line contains notes: a, a, a, a, a, a, a, a, a, a, a, a, a, a, a, a, a, a, a, a.

Handwritten musical notation on a five-line staff. The top line contains notes: k, r, a, f, g, h, f, a, p, a, h, f, g, h, k, r, a, a, a, a, a, a, a, a.

Handwritten musical notation on a five-line staff. The top line contains notes: a, a, a, a, a, a, a, a, a, a, a, a, a, a, a, a, a, a, a, a.

Handwritten musical notation on a five-line staff. The top line contains notes: a, b, a, b, a, e, a, a, a, a, a, a, a, a, a, a, a, a, a, a.

Handwritten musical notation on a five-line staff. The top line contains notes: g, g, g, g, a, r, a, a, r, d, a, r, d, g, g, g, g, a, r, a, a, r, d.

Handwritten musical notation on a five-line staff. The top line contains notes: a, a, a, a, a, a, a, a, a, a, a, a, a, a, a, a, a, a, a, a.

Handwritten musical notation on a five-line staff. The top line contains notes: a, r, e, a, b, r, n, a, b, a, a, a, a, a, a, a, a, a, a, a.

Segue Fuga

Fuga

Handwritten musical notation for the first staff of a fugue. It features a treble clef, a common time signature, and a key signature of one flat. The melody consists of quarter and eighth notes with various accidentals.

Handwritten musical notation for the second staff of the fugue. It features a bass clef and a common time signature. The accompaniment consists of quarter and eighth notes.

Handwritten musical notation for the third staff of the fugue. It features a treble clef and a common time signature. The melody continues with quarter and eighth notes.

Handwritten musical notation for the fourth staff of the fugue. It features a treble clef and a common time signature. The accompaniment includes a sequence of numbers 4, 5, 4, 6 below the staff.

Handwritten musical notation for the fifth staff of the fugue. It features a treble clef and a common time signature. The melody continues with quarter and eighth notes.

Handwritten musical notation for the sixth staff of the fugue. It features a treble clef and a common time signature. The accompaniment includes a sequence of numbers 6, 4, 5, 5, 4, 6 below the staff.

Handwritten musical notation for the seventh staff of the fugue. It features a treble clef and a common time signature. The melody continues with quarter and eighth notes.

Handwritten musical notation for the eighth staff of the fugue. It features a treble clef and a common time signature. The accompaniment includes a sequence of numbers 4, 5, 4, 6 below the staff.

Handwritten musical notation on a five-line staff. The top line contains a sequence of notes with stems and flags, including a sharp sign. The bottom line contains a sequence of letters: a, a, a, a, a, a, a, e.

Handwritten musical notation on a five-line staff. The top line contains notes with stems and flags. The bottom line contains letters: a, a, 4, a, 4, 5, a.

Handwritten musical notation on a five-line staff. The top line contains notes with stems and flags. The bottom line contains letters: 4, a, a, a, a, a, 4, a, 4, a, a, 4.

Handwritten musical notation on a five-line staff. The top line contains notes with stems and flags. The bottom line contains letters: a, 5, a, 5, a, a, 4, 5, 4, 6, 5.

Handwritten musical notation on a five-line staff. The top line contains notes with stems and flags. The bottom line contains letters: a, a, a, a, a, a, a, a, a, a.

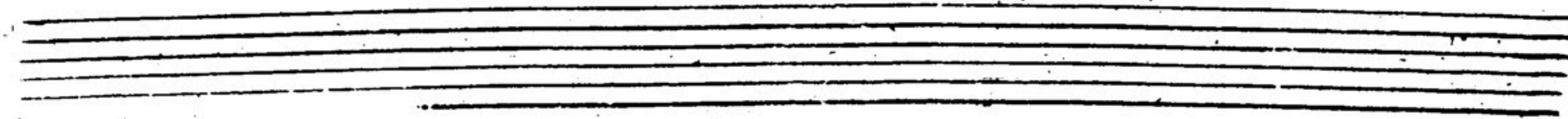
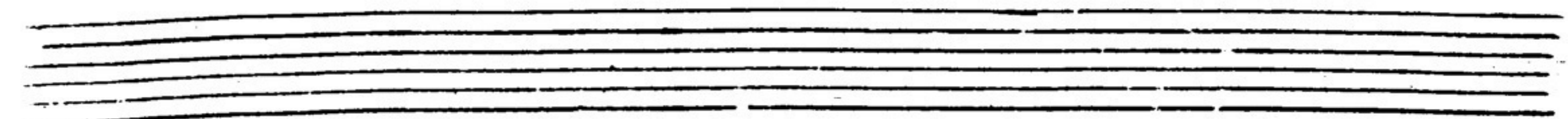
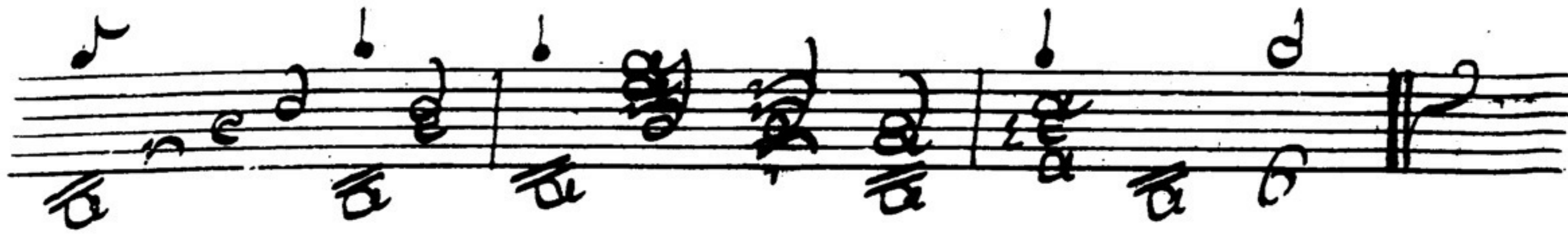
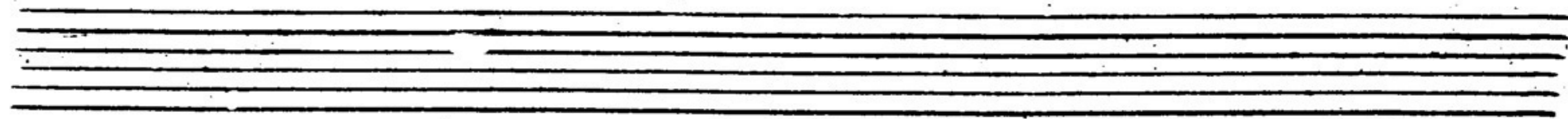
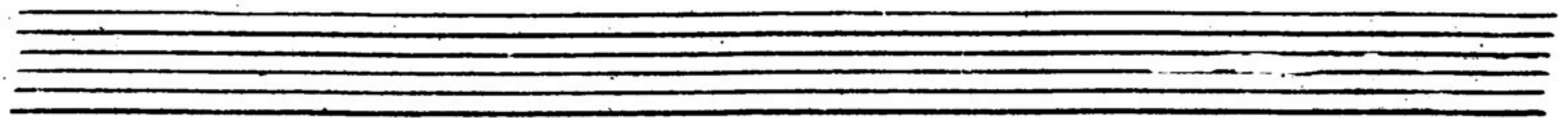
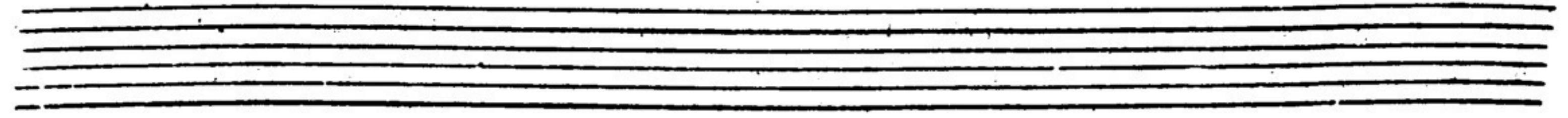
Handwritten musical notation on a five-line staff. The top line contains notes with stems and flags. The bottom line contains letters: a, a, 4, a, a.

Handwritten musical notation on a five-line staff. The top line contains notes with stems and flags. The bottom line contains letters: a, a, a, a, a, 5, a.

Handwritten musical notation on a five-line staff. The top line contains notes with stems and flags. The bottom line contains letters: a, a, a, a.

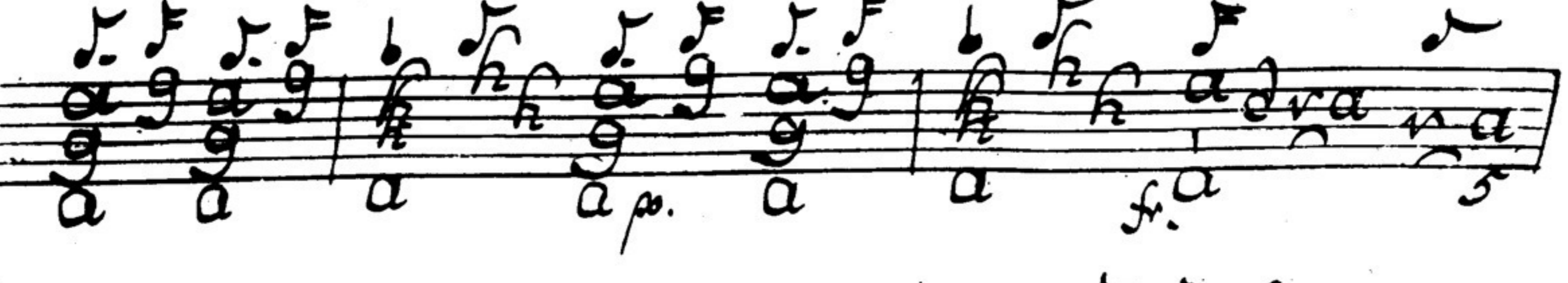
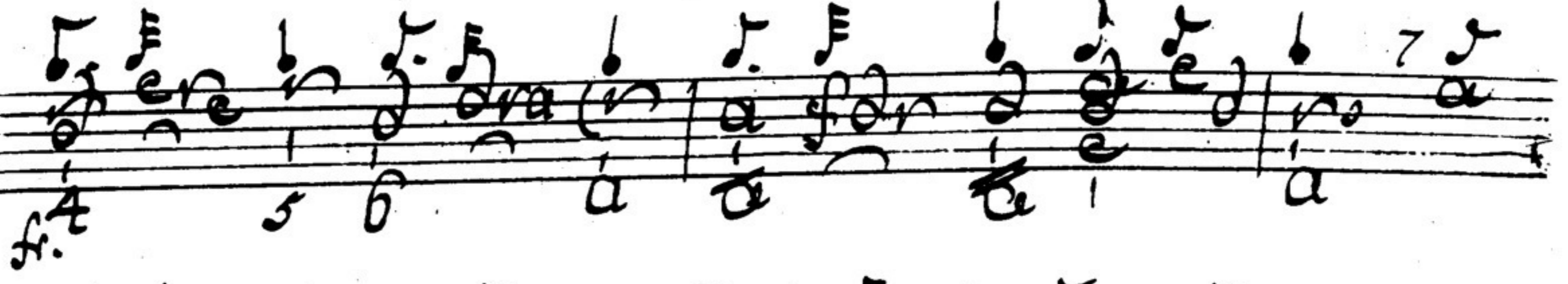
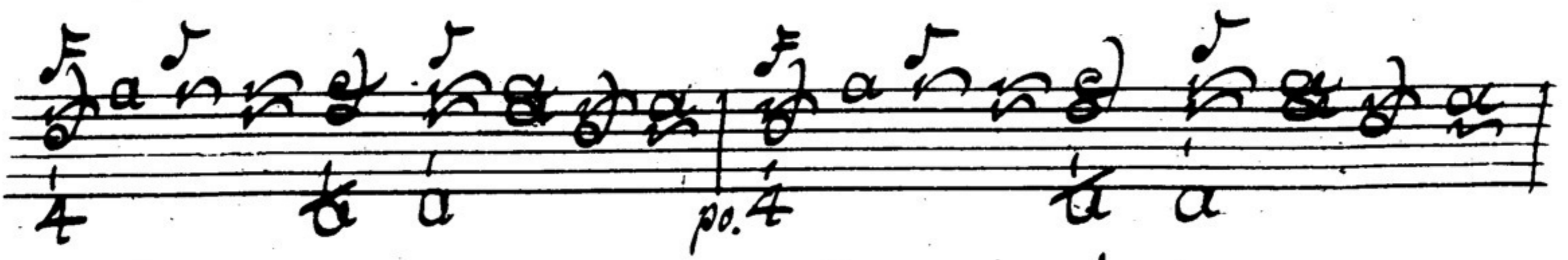
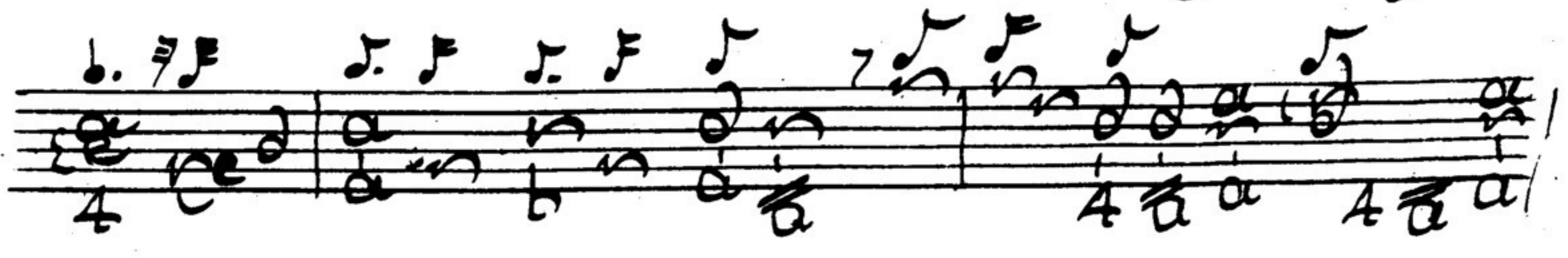
mus
M3
.D88
1986

INDIANA UNIVERSITY
SCHOOL OF MUSIC
LIBRARY
BLOOMINGTON, IN 47405



mus
M3
.D88
1986

Spiritoso



Segue Vivace.

Vivace

Handwritten musical notation for the first system, featuring a treble clef, a 3/4 time signature, and a key signature of one flat. The melody consists of eighth and quarter notes. The bass line is written with letters 'a' and '4' below the staff.

Handwritten musical notation for the second system, continuing the melody and bass line from the first system.

Handwritten musical notation for the third system, including dynamic markings 'p' and 'p.a'.

Handwritten musical notation for the fourth system, ending with a double bar line.

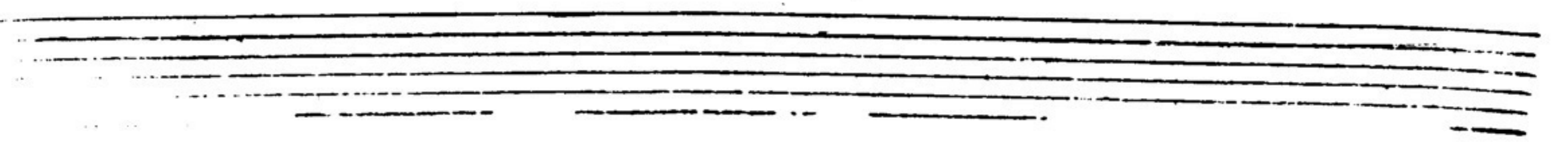
Handwritten musical notation for the fifth system, starting with a new treble clef.

Handwritten musical notation for the sixth system, including dynamic markings 'p' and '5 5'.

Handwritten musical notation for the seventh system, including dynamic markings 'f' and 'p'.

Handwritten musical notation for the eighth system, including dynamic markings 'f' and 'p'.

Seque.



Gavotte

ne en a ra dra a ra dra a h g h f a h

ra dra a ra dra a ra dra a ra dra

ra dra a ra dra a ra dra a ra dra

ra dra a ra dra a ra dra a ra dra

ne en a ra dra a ra dra a h g h f a h

ra dra a ra dra a ra dra a ra dra

ra dra a ra dra a ra dra a ra dra

ra dra a ra dra a ra dra a ra dra

ra dra a ra dra a ra dra a ra dra

Handwritten musical notation on a five-line staff. The melody consists of eighth and quarter notes. The bass line features a steady eighth-note accompaniment. A '4' is written below the staff, likely indicating a measure or a specific rhythmic pattern.

Handwritten musical notation on a five-line staff. The melody continues with eighth and quarter notes. The bass line has a consistent eighth-note accompaniment. A '4' is written below the staff.

Handwritten musical notation on a five-line staff. The melody features a mix of eighth and quarter notes. The bass line has a steady eighth-note accompaniment. A '4' is written below the staff.

Handwritten musical notation on a five-line staff. The melody consists of eighth and quarter notes. The bass line has a steady eighth-note accompaniment. A '4' is written below the staff.

Handwritten musical notation on a five-line staff. The melody includes eighth and quarter notes. The bass line has a steady eighth-note accompaniment. A '4' is written below the staff.

Handwritten musical notation on a five-line staff. The melody features eighth and quarter notes. The bass line has a steady eighth-note accompaniment. A '4' is written below the staff.

Handwritten musical notation on a five-line staff. The melody consists of eighth and quarter notes. The bass line has a steady eighth-note accompaniment. A '4' is written below the staff.

Handwritten musical notation on a five-line staff. The melody features eighth and quarter notes. The bass line has a steady eighth-note accompaniment. A '4' is written below the staff.

Handwritten musical score consisting of six systems of staves. Each system contains a vocal line with lyrics and a piano accompaniment line. The lyrics are 'ra', 'a', 'a', 'a', 'a', 'a'. The notation includes various note values, rests, and dynamic markings such as 'p' and 'pp'.

Al Fine

