

I 40 89
14

Concerto -

à IV.

L'auto,

Violino I^{mo}

Violino II^{do}

e

Violoncello.

composto

di Sr^o Lauffenheimer.

G. mot.



Andante.

Handwritten musical notation on a five-line staff. The notation includes various note values (quarter, eighth, and sixteenth notes) and rests. The notes are written in a cursive style. Below the staff, there are several lowercase letters 'a' and 'b' written in a similar cursive hand, likely serving as a shorthand for the notes above.

Handwritten musical notation on a five-line staff. The notation includes various note values and rests. Below the staff, there are several lowercase letters 'a' and 'b' written in a similar cursive hand, likely serving as a shorthand for the notes above.

Handwritten musical notation on a five-line staff. The notation includes various note values and rests. Below the staff, there are several lowercase letters 'a' and 'b' written in a similar cursive hand, likely serving as a shorthand for the notes above.

Handwritten musical notation on a five-line staff. The notation includes various note values and rests. Below the staff, there are several lowercase letters 'a' and 'b' written in a similar cursive hand, likely serving as a shorthand for the notes above.

Handwritten musical notation on a five-line staff. The notation includes various note values and rests. Below the staff, there are several lowercase letters 'a' and 'b' written in a similar cursive hand, likely serving as a shorthand for the notes above.

si voltu.

Handwritten musical notation on a five-line staff. The top line contains rhythmic markings (vertical strokes) above the notes. The notes are mostly quarter and eighth notes. Below the staff, there are several lowercase 'a' characters, some with a slash through them, indicating fingerings or accents.

Handwritten musical notation on a five-line staff. The notes are mostly quarter and eighth notes. Below the staff, there are several lowercase 'a' characters, some with a slash through them, and some numbers like '4' and '3' with a slash, possibly indicating time signatures or fingerings.

Handwritten musical notation on a five-line staff. The notes are mostly quarter and eighth notes. Below the staff, there are several lowercase 'a' characters, some with a slash through them, and a number '5' with a slash, possibly indicating a time signature or fingering.

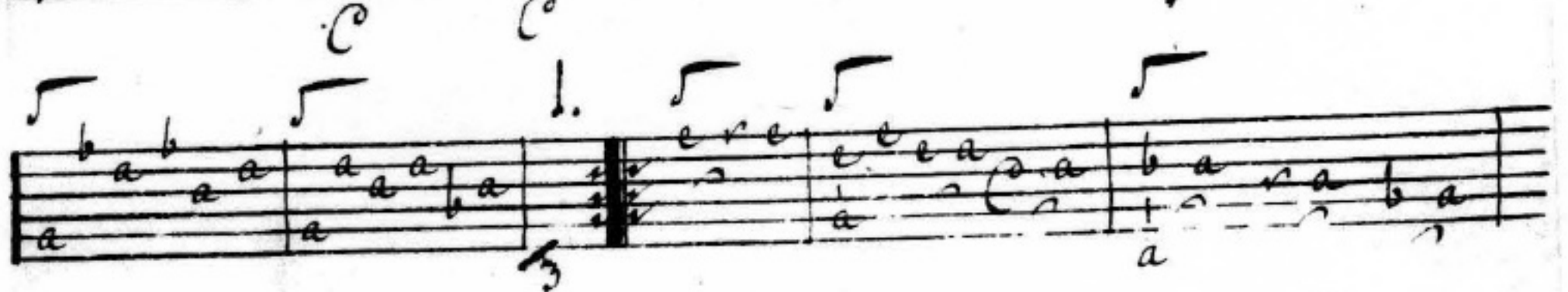
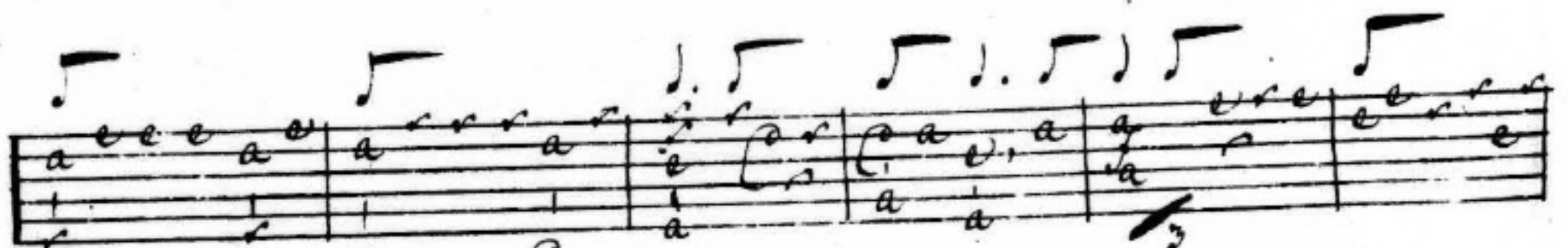
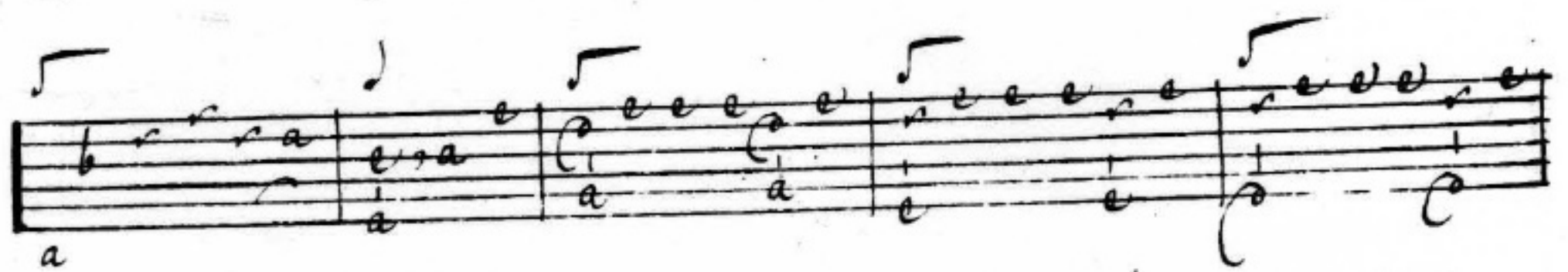
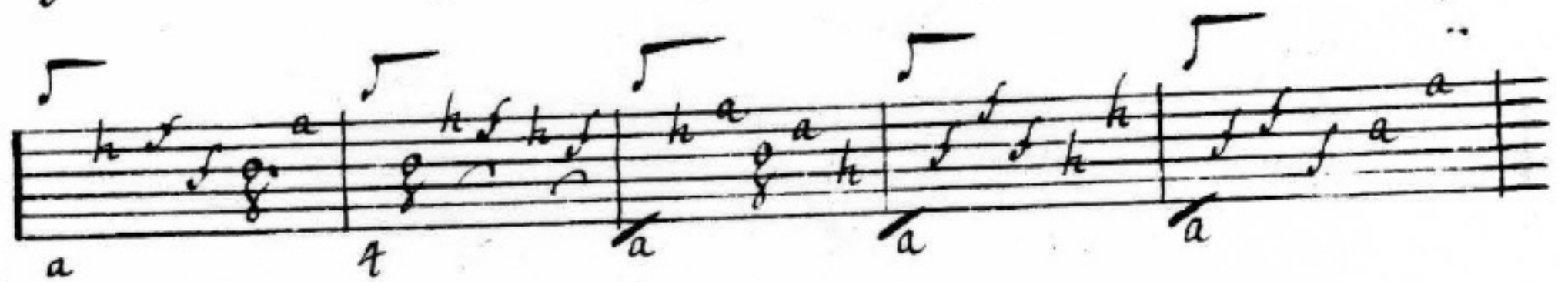
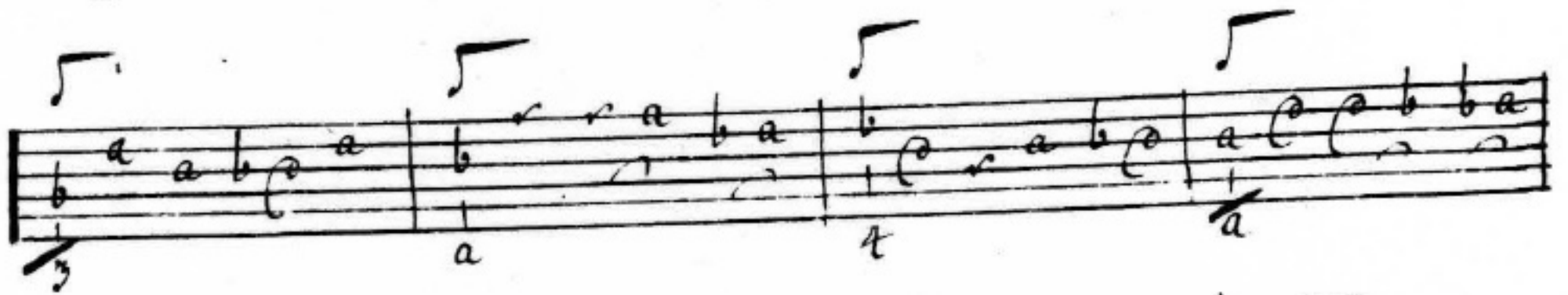
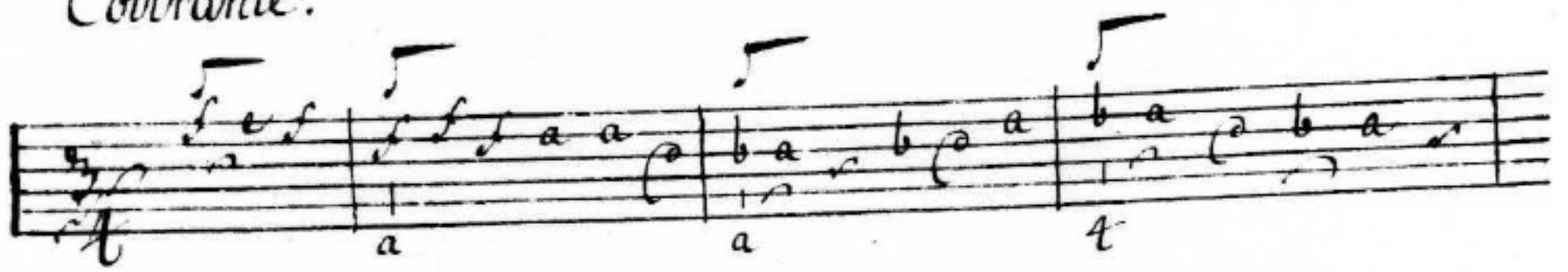
Handwritten musical notation on a five-line staff. The notes are mostly quarter and eighth notes. Below the staff, there are several lowercase 'a' characters, some with a slash through them, and numbers '4' and '3' with a slash, possibly indicating time signatures or fingerings.

Handwritten musical notation on a five-line staff. The notes are mostly quarter and eighth notes. Below the staff, there are several lowercase 'a' characters, some with a slash through them, and numbers '3' and '3' with a slash, possibly indicating time signatures or fingerings.

Handwritten musical notation on a five-line staff. The notes are mostly quarter and eighth notes. Below the staff, there are several lowercase 'a' characters, some with a slash through them, and numbers '3' and '3' with a slash, possibly indicating time signatures or fingerings.

si volti.

Conrante.



Handwritten musical notation on a five-line staff. The notes are mostly quarter and eighth notes, with some rests. The letters 'a' and 'b' are written below the notes, indicating pitch. There are some slurs and ties. The staff ends with a double bar line.

Handwritten musical notation on a five-line staff. Similar to the first staff, it contains quarter and eighth notes with 'a' and 'b' below. There are some slurs and ties. The staff ends with a double bar line.

Handwritten musical notation on a five-line staff. Similar to the previous staves, it contains quarter and eighth notes with 'a' and 'b' below. There are some slurs and ties. The staff ends with a double bar line.

Handwritten musical notation on a five-line staff. Similar to the previous staves, it contains quarter and eighth notes with 'a' and 'b' below. There are some slurs and ties. The staff ends with a double bar line.

Handwritten musical notation on a five-line staff. Similar to the previous staves, it contains quarter and eighth notes with 'a' and 'b' below. There are some slurs and ties. The staff ends with a double bar line.

Handwritten musical notation on a five-line staff. Similar to the previous staves, it contains quarter and eighth notes with 'a' and 'b' below. There are some slurs and ties. The staff ends with a double bar line.

Handwritten musical notation on a five-line staff. Similar to the previous staves, it contains quarter and eighth notes with 'a' and 'b' below. There are some slurs and ties. The staff ends with a double bar line.

Handwritten musical notation on a five-line staff. Similar to the previous staves, it contains quarter and eighth notes with 'a' and 'b' below. There are some slurs and ties. The staff ends with a double bar line.

si volti.

Henriet.

Handwritten musical notation for the first system. It consists of two staves. The upper staff contains a melodic line with notes and rests. The lower staff contains a bass line with notes and rests. The notes are labeled with letters 'a' and 'b' and some have accidentals (sharps and flats). There are also some numerical markings like '3' and '4' below the notes.

Handwritten musical notation for the second system. It consists of two staves. The upper staff contains a melodic line with notes and rests. The lower staff contains a bass line with notes and rests. The notes are labeled with letters 'a' and 'b' and some have accidentals. There are also some numerical markings like '3' and '6' below the notes.

Handwritten musical notation for the third system. It consists of two staves. The upper staff contains a melodic line with notes and rests. The lower staff contains a bass line with notes and rests. The notes are labeled with letters 'a' and 'b' and some have accidentals. There are also some numerical markings like '6' and 'a' below the notes.

Handwritten musical notation for the fourth system. It consists of two staves. The upper staff contains a melodic line with notes and rests. The lower staff contains a bass line with notes and rests. The notes are labeled with letters 'a' and 'b' and some have accidentals. There are also some numerical markings like '3' and '4' below the notes.

Handwritten musical notation for the fifth system. It consists of two staves. The upper staff contains a melodic line with notes and rests. The lower staff contains a bass line with notes and rests. The notes are labeled with letters 'a' and 'b' and some have accidentals. There are also some numerical markings like '3' and '4' below the notes.

Largo.

Handwritten musical score for a piece marked "Largo". The score consists of five staves of music. The first staff begins with a treble clef, a 3/4 time signature, and a key signature of one flat (B-flat). The music is written in a single melodic line with various note values and rests. Below the notes are fingerings: "a" for the first finger, "s" for the thumb, and "4" for the fourth finger. The second staff continues the melody with similar note values and fingerings, including "a", "b", "s", and "6". The third staff features a change in time signature to 4/4 and includes a double bar line. The fourth staff continues the melody with fingerings "a", "b", "a", "c", "4", and "c". The fifth staff concludes the piece with a double bar line and fingerings "6", "5", "4", "3", and "a". The notation includes various note heads, stems, and beams, characteristic of a handwritten manuscript.

si velli.

Figure.

A handwritten musical score for guitar, consisting of seven systems of staves. Each system contains a musical staff with notes and a corresponding guitar tablature staff with fret numbers. The notation includes various rhythmic values, accidentals, and articulation marks. The piece concludes with a double bar line and a key signature change to two flats.

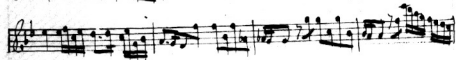
The score is organized into seven systems, each with a musical staff and a guitar tablature staff. The tablature uses numbers 1-5 to indicate fret positions. The piece concludes with a double bar line and a key signature change to two flats.

II 11029
14

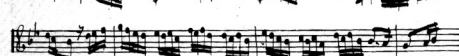
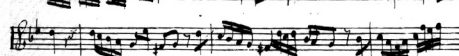
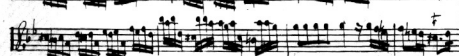
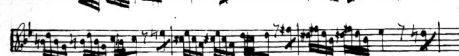
Violino 1.
dal Concerto
di
F. Lauffenstiner.
G. mol.



Andante.



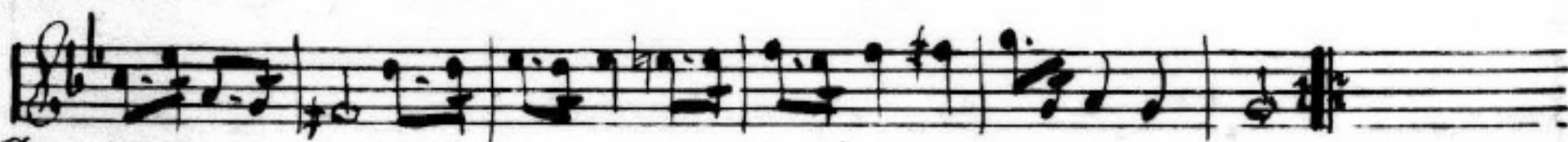
f



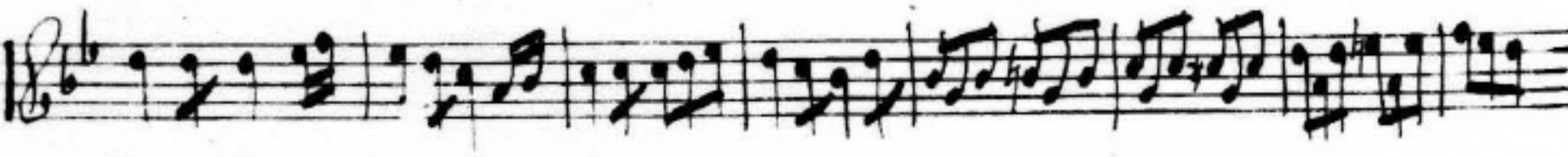
Menuet.

Volti.

Sarabanda.



Gigue



Jr 4089
14

Violino II^{do}
dal
Concerto di
Sgr. Laufensteiner.
I. mot.



Andante.

This is a handwritten musical score for a single melodic line, likely for a piano or violin. The piece is marked *Andante*. The notation is written on a single staff with a treble clef and a key signature of one flat (B-flat). The music consists of 14 measures. The first measure begins with a treble clef, a key signature of one flat, and a common time signature. The melody is characterized by a mix of eighth and sixteenth notes, often beamed together in groups. There are several dynamic markings, including *f* (forte) and *mf* (mezzo-forte). A section starting at measure 6 is marked *Alia* and features a change in time signature to 7/8. The piece concludes with a double bar line and repeat dots. The handwriting is clear and legible, typical of a composer's manuscript.



Mouruet.



volti.

Gigue.

A handwritten musical score for a piece titled "Gigue." The score is written on 13 staves of five-line music paper. The notation is in a single system, likely for a keyboard instrument. The key signature is one sharp (F#), and the time signature is 3/4. The music is characterized by a lively, rhythmic quality, with frequent sixteenth and thirty-second notes, often beamed together. There are several trills and grace notes throughout the piece. The score begins with a treble clef and a key signature of one sharp. The piece concludes with a double bar line and a final cadence. The handwriting is in dark ink on aged, slightly yellowed paper.

Al Fine.

Violoncello

Dal
Concerto
di

J. Laufensteiner.

Op.
9. mol.



Largo.

Handwritten musical notation for the first staff of the Largo section. The staff is in treble clef with a key signature of one sharp (F#) and a common time signature (C). The notation includes various note values and rests, with fingerings indicated by numbers 1-5 above the notes.

Handwritten musical notation for the second staff of the Largo section. The staff is in bass clef. The notation includes various note values and rests, with fingerings indicated by numbers 1-5 above the notes.

Handwritten musical notation for the third staff of the Largo section. The staff is in bass clef. The notation includes various note values and rests, with fingerings indicated by numbers 1-5 above the notes.

Handwritten musical notation for the fourth staff of the Largo section. The staff is in bass clef. The notation includes various note values and rests, with fingerings indicated by numbers 1-5 above the notes.

Handwritten musical notation for the fifth staff of the Largo section. The staff is in bass clef. The notation includes various note values and rests, with fingerings indicated by numbers 1-5 above the notes.

Handwritten musical notation for the sixth staff of the Largo section. The staff is in bass clef. The notation includes various note values and rests, with fingerings indicated by numbers 1-5 above the notes.

Aria.

Handwritten musical notation for the first staff of the Aria section. The staff is in treble clef with a key signature of one sharp (F#) and a common time signature (C). The notation includes various note values and rests, with fingerings indicated by numbers 1-5 above the notes.

Handwritten musical notation for the second staff of the Aria section. The staff is in bass clef. The notation includes various note values and rests, with fingerings indicated by numbers 1-5 above the notes.

Handwritten musical notation for the third staff of the Aria section. The staff is in bass clef. The notation includes various note values and rests, with fingerings indicated by numbers 1-5 above the notes.

Handwritten musical notation for the fourth staff of the Aria section. The staff is in bass clef. The notation includes various note values and rests, with fingerings indicated by numbers 1-5 above the notes.

Handwritten musical notation on a single staff, featuring various notes, rests, and accidentals.

Handwritten musical notation on a single staff, including a first-measure rest and several notes with accidentals.

Handwritten musical notation on a single staff, showing a sequence of notes with various accidentals.

Handwritten musical notation on a single staff, featuring notes with accidentals and some slurs.

Handwritten musical notation on a single staff, including notes with accidentals and a first-measure rest.

Handwritten musical notation on a single staff, starting with the word "Meno." and containing notes with accidentals and slurs.

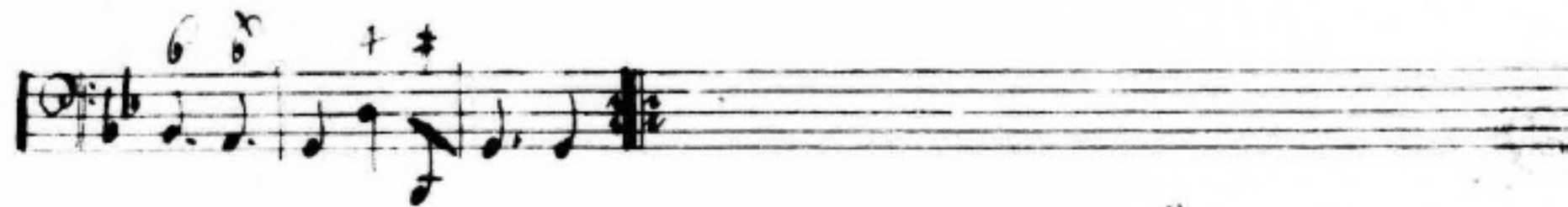
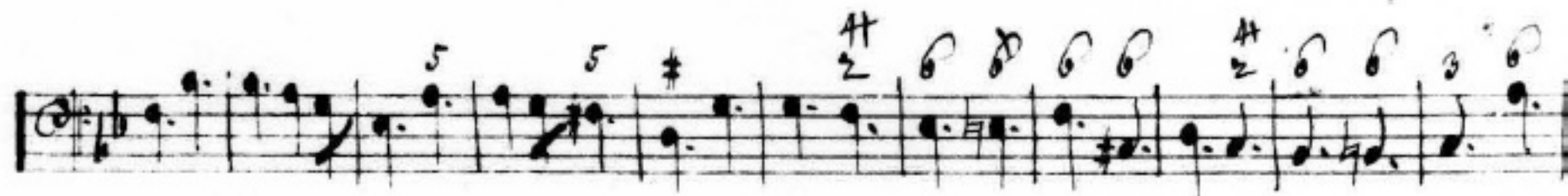
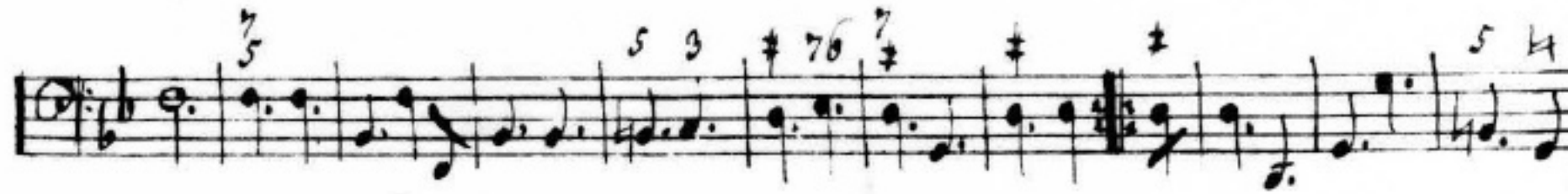
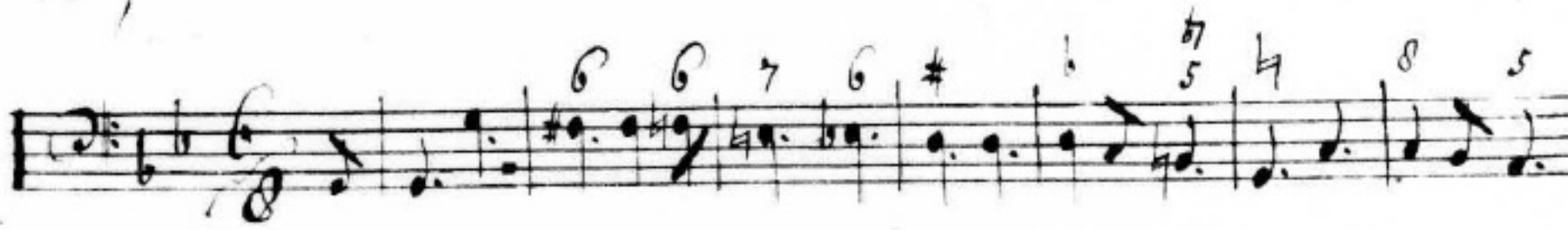
Handwritten musical notation on a single staff, featuring notes with accidentals and slurs.

Handwritten musical notation on a single staff, starting with the word "Larg." and containing notes with accidentals and slurs.

Handwritten musical notation on a single staff, featuring notes with accidentals and slurs.

volti.

Gigue.



Al Fine.