

Israel, Anhang
28.

28 - Anhang

~~Mus. N^o 205.~~

I



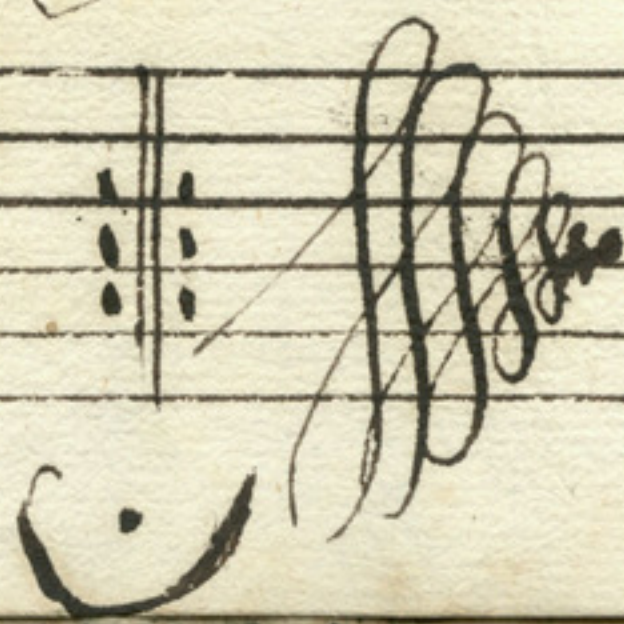
Israel, Anhang. 28.



This image shows a page of handwritten musical notation on aged, yellowed paper. The page is divided into four systems, each consisting of two staves. The notation is very faint and difficult to read, but it appears to be a musical score. In the upper right quadrant, there is some faint, illegible text that might be a title or a section name. The paper shows signs of age, including some staining and a slightly uneven texture.

Serenata.

piano.



Aria.

Aria.

3/4

d. d. d. d. d. d. d.

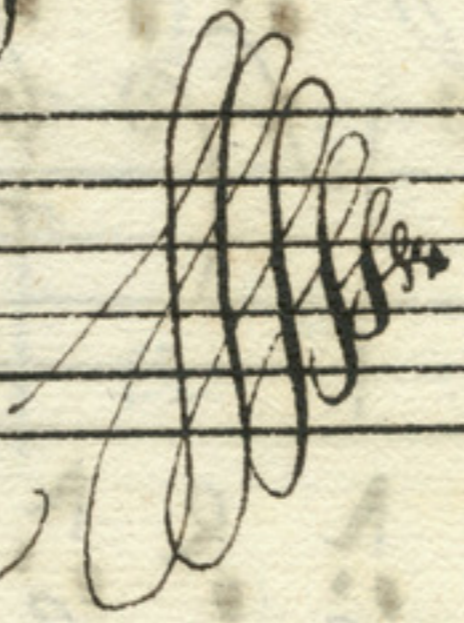
a C e a a a b C C

d. d. d. d. d. d. d. d.

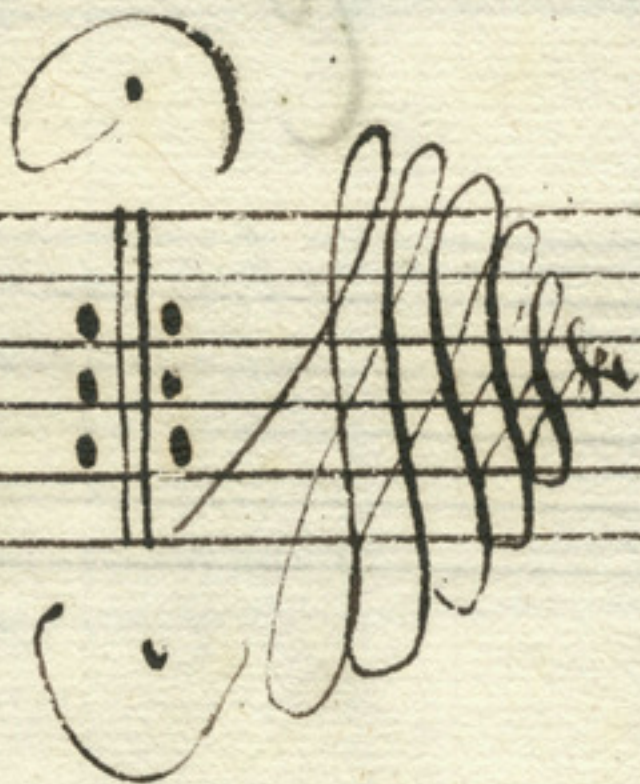
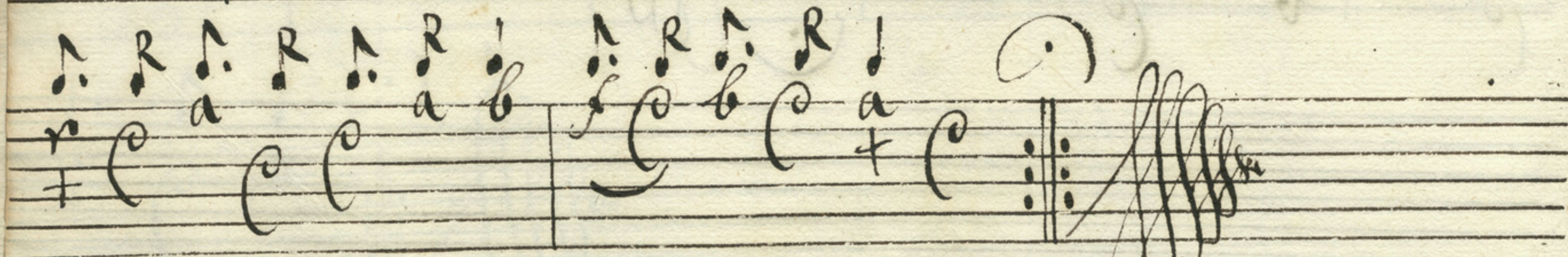
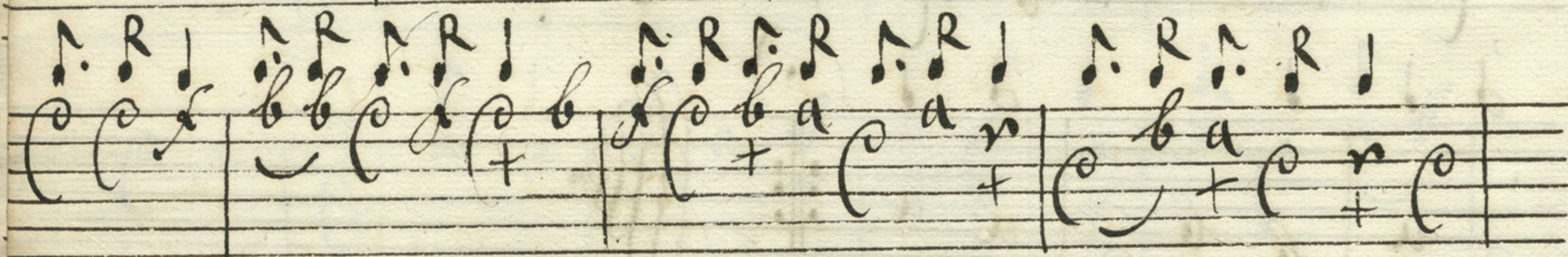
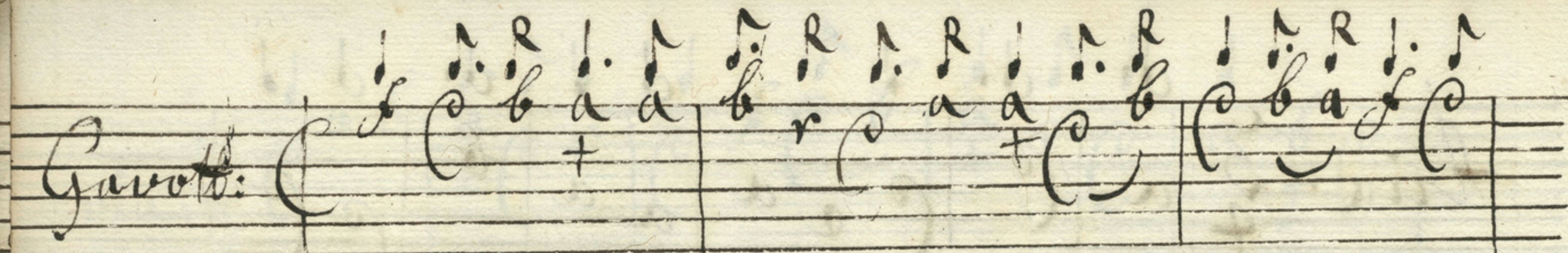
a a r a b C e a

d. d. d. d. d.

a b b C a a



Gavotte:



Garrot:

Handwritten musical notation on a five-line staff. The notation consists of rhythmic symbols (quarter notes, eighth notes, rests) and letters (a, e, b, r) placed on the lines. The score is divided into measures by vertical bar lines. A double bar line with repeat dots appears in the middle of the piece. The bottom of the page features a large, decorative flourish.

Sarab. 3/4

Handwritten musical notation for the first system of a Sarabande. It consists of a single staff with a treble clef and a 3/4 time signature. The melody is written in a cursive style with notes and rests. The notes are mostly quarter notes and half notes, with some eighth notes. The rests are indicated by a '+' sign. The piece ends with a double bar line and repeat dots.

Handwritten musical notation for the second system of the Sarabande. It consists of a single staff with a treble clef. The melody continues from the first system. The notes are mostly quarter notes and half notes, with some eighth notes. The rests are indicated by a '+' sign. The piece ends with a double bar line and repeat dots.

Handwritten musical notation for the third system of the Sarabande. It consists of a single staff with a treble clef. The melody continues from the second system. The notes are mostly quarter notes and half notes, with some eighth notes. The rests are indicated by a '+' sign. The piece ends with a double bar line and repeat dots.

Handwritten musical notation for the fourth system of the Sarabande. It consists of a single staff with a treble clef. The melody continues from the third system. The notes are mostly quarter notes and half notes, with some eighth notes. The rests are indicated by a '+' sign. The piece ends with a double bar line and repeat dots.

Sarab:

Handwritten musical notation on a five-line staff. The first line contains rhythmic notation: a quarter note 'd', a half note 'o', a quarter note 'd', a quarter note 'd', a quarter note 'd', a quarter note 'd', a quarter note 'd', a quarter note 'o', a quarter note 'd', a quarter note 'o'. The second line contains notes: 'a', 'e', a half note 'a', a half note 'b', a half note 'r', a half note 'a', a half note 'b', a half note 'r', a half note 'r'.

Handwritten musical notation on a five-line staff. The first line contains rhythmic notation: a quarter note 'd', a half note 'o', a quarter note 'd', a half note 'o', a quarter note 'd', a half note 'o', a quarter note 'o', a quarter note 'o', a quarter note 'o', a quarter note 'o', a quarter note 'd', a quarter note 'o'. The second line contains notes: 'r', 'r', 'a', 'a', a double bar line with repeat dots, a half note 'a', a half note 'b', a half note 'r', a half note 'a'.

Handwritten musical notation on a five-line staff. The first line contains rhythmic notation: a quarter note 'd', a quarter note 'd', a quarter note 'd', a half note 'o', a quarter note 'd', a half note 'o', a quarter note 'd', a quarter note 'o', a quarter note 'o', a quarter note 'd', a quarter note 'o'. The second line contains notes: 'r', 'a', a half note 'r', a half note 'a', a half note 'a', a half note 'a', a half note 'a', a half note 'b', a half note 'r'.

Handwritten musical notation on a five-line staff. The first line contains rhythmic notation: a quarter note 'o', a quarter note 'd', a half note 'o'. The second line contains notes: 'a', a double bar line with repeat dots, followed by a large, dense scribble of ink.

Echo.

forte.

piano.

f.

Handwritten musical score for a piece titled "Echo". The score is written on five staves. The first staff contains the vocal line with lyrics "C o b a s a r a n c o s r a n c o s r e". The second staff contains rhythmic notation with letters "h", "k", and "r". The third staff contains rhythmic notation with letters "h", "k", and "r". The fourth staff contains rhythmic notation with letters "h", "k", and "r". The fifth staff contains rhythmic notation with letters "h", "k", and "r". The score includes dynamic markings "forte.", "piano.", and "f.". It also features a repeat sign at the end of the fifth staff.

f.

p.

forte

Echo

Handwritten musical score for 'Echo' on ten staves. The notation includes notes, rests, and dynamic markings such as 'forte' and 'piano'. The score is written in a cursive style on aged paper. The first staff begins with the word 'Echo' and a large 'C' time signature. The music consists of several measures across the staves, with notes and rests written in a cursive hand. Dynamic markings 'forte.' and 'piano.' are clearly visible. The notation includes various note values and rests, with some notes having stems and flags. The paper shows signs of age, including some staining and discoloration.

Handwritten musical notation on a five-line staff. The notes are mostly quarter and eighth notes, with some rests. The lyrics are written below the notes: *aaa aaa rraaaa aaaa r h f e r f e h f e r f e*. There are small 'x' marks under some notes. The word *fort.* is written at the beginning of the staff.

Handwritten musical notation on a five-line staff. The notes are mostly quarter and eighth notes. The lyrics are: *rrrrraaaa rrrrrraaaa era era era era e*. There are small 'x' marks under some notes. The word *piano.* is written above the staff.

Handwritten musical notation on a five-line staff. The notes are mostly quarter and eighth notes. The lyrics are: *rrrrraeee raaa aeee raa ah R f e n a a k f e*. There are small 'x' marks under some notes.

Handwritten musical notation on a five-line staff. The notes are mostly quarter and eighth notes. The lyrics are: *raa f e f a r a r a a a a a a a h e r a a r*. There are small 'x' marks under some notes.

Handwritten musical notation on a five-line staff. The notes are mostly quarter and eighth notes. The lyrics are: *h e r a a r r r f f f r a a a r r r r r r r a e r*. There are small 'x' marks under some notes.

p. *f.*

Gavott: *fort:* *piano.*

Gavott:

d d . n n R n R | n R n R n R

a a a n e a a a r e a

fort:

piano.

d d d n R | n R | d

a a a n n e a n a r e a n a n n a

for:

pian:

fort:

d d d d d

b n a n b n a n n e a a a

pian:

fort:

d d

a a

Pian:



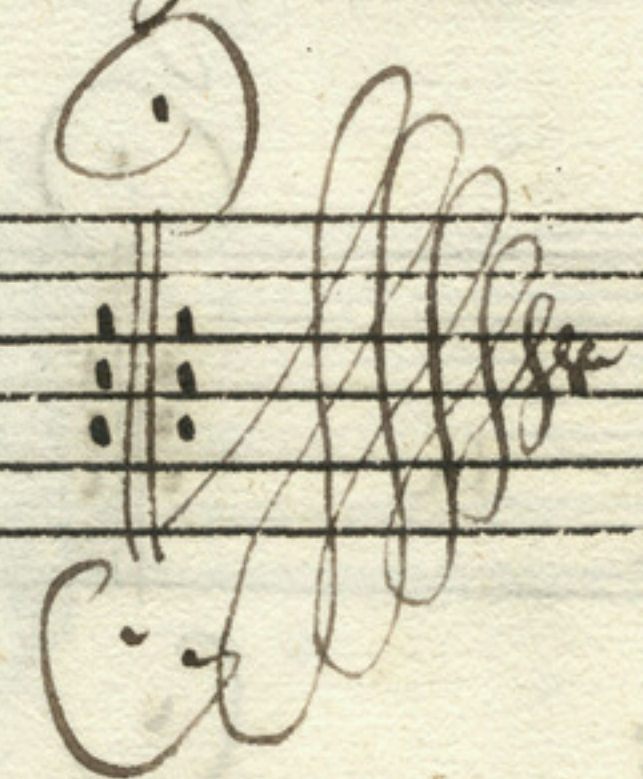
farab: *fort:* *pian:*

fort: *pian:*

fort: *pian:* *fort:*

pian: *fort:*

pian:



Handwritten musical notation on a five-line staff. The notes are: d o d a d o d a d o d o. Below the staff, the lyrics are: *farab:* a e | a a | b r | a a | b r | a a. Dynamic markings include *fort:* under the first measure and *pian:* under the fifth measure.

Handwritten musical notation on a five-line staff. The notes are: d a d a d d d d o d d d d o. Below the staff, the lyrics are: b b | r r | e a r r | a a | e a r r | a a. Dynamic markings include *fort:* under the first measure and *pian:* under the fourth measure. The piece ends with a double bar line and repeat dots.

Handwritten musical notation on a five-line staff. The notes are: d d d d o d d d d o d d d d o d d d. Below the staff, the lyrics are: a a a | r r | e e e | a a | e e e | a a | b b b. Dynamic markings include *fort:* under the first measure, *pian:* under the fourth measure, and *fort:* under the sixth measure.

Handwritten musical notation on a five-line staff. The notes are: d a d d d d a d d d d a. Below the staff, the lyrics are: r r | a a | a a | a a. Dynamic markings include *pian:* under the fourth measure. The piece ends with a double bar line and repeat dots, followed by a large, decorative flourish.

Gigue.

fort:

pian:

fort:

pian:

fort:

pian:

fort:

pian:

Handwritten musical score for a Gigue, consisting of five staves. The music is written in a cursive style with lyrics underneath. The piece begins with a treble clef and a 4/4 time signature. The lyrics are: "r r a r a r a a", "h e h e h e h e h e h e", "r r a r r h r r a r r r r", "a a a r a r a r a", and "a a a r a r a r a". Dynamic markings include *fort:* (forte) and *pian:* (piano). The score concludes with a double bar line and a repeat sign.

Gigue. $\frac{3}{4}$

d. d. d. d. d. d. d. d. d. d. d.

a a a e a a e a e n a e

d. d. d. d. d. d. d. d. d. d.

n a ||| a a n n r n n

Cont: C

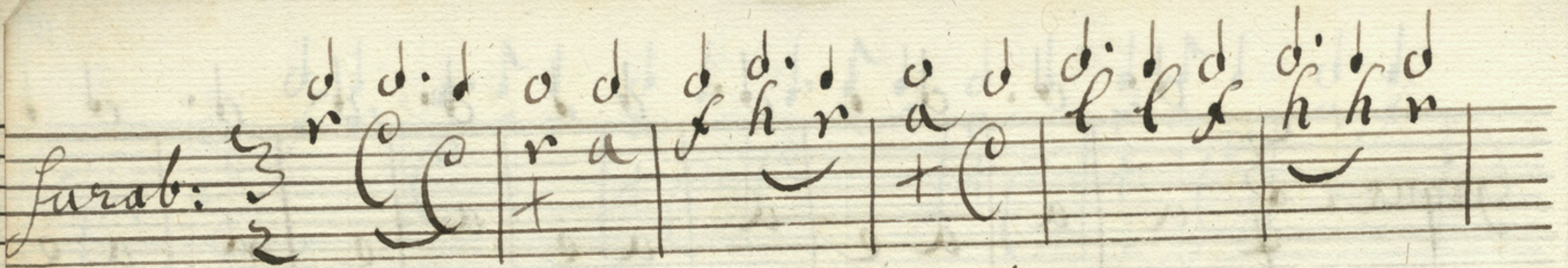
d. d. d. d. d. d. d. d. d. d.

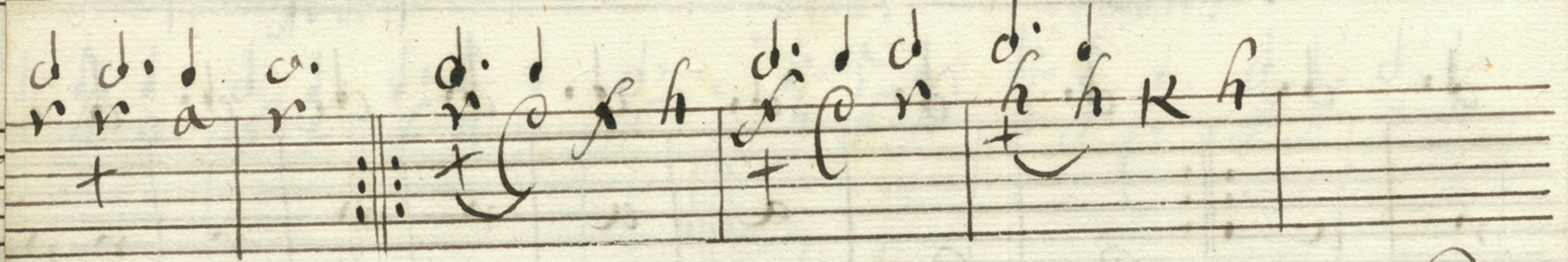
r n n n r e a e a a e

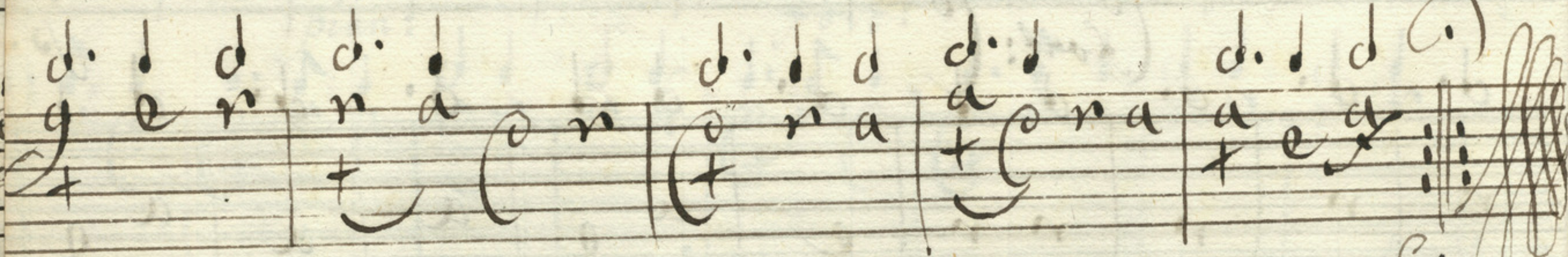
d. d. d.

a a a |||



furab: 







Surab:

Handwritten musical score on three staves. The top staff contains rhythmic notation (dotted and plain notes). The middle staff contains lyrics: "r a r r a a a r a". The bottom staff contains lyrics: "a a a b a ||: a r a b a r a b b r". The piece concludes with a double bar line and a large, decorative flourish.

Gavott: *Ca* *an* *a* | *ra* *ea* | *an* *ea* | *an* *ea* |

an *ea* | *an* *ea* | *an* *ea* | *an* *ea* | *an* *ea* | *an* *ea* |

an *ea* | *an* *ea* | *an* *ea* | *an* *ea* | *an* *ea* | *an* *ea* |

an *ea* | *an* *ea* | *an* *ea* | *an* *ea* | *an* *ea* | *an* *ea* |

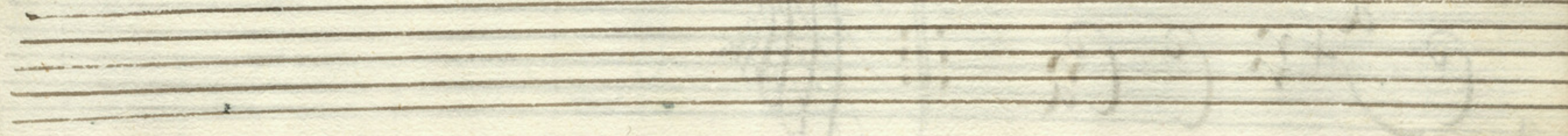
Garrotti:

Handwritten musical score for 'Garrotti' on three staves. The notation includes rhythmic stems, notes, and lyrics. The first staff has lyrics 'r b r r a r a a a a a a'. The second staff has lyrics 'a r e a n e a n e r a n e a a b'. The third staff has lyrics 'a a a r r a r a n' followed by a large scribble.

Handwritten musical notation on a five-line staff. It begins with a treble clef and a common time signature 'C'. The notes are written in a cursive style, with some letters like 'a', 'r', and 'n' appearing below the staff. The piece concludes with a large, decorative flourish.

Handwritten musical notation on a five-line staff. It begins with the word 'Prælu:' written in a cursive hand. The notation includes notes and rests, with some letters like 'a', 'r', and 'n' written below the staff. The piece ends with a large, decorative flourish.

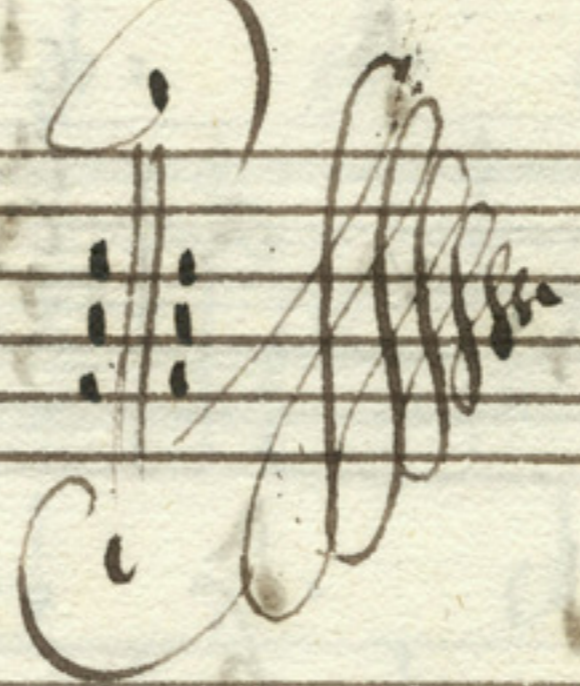
Handwritten musical notation on a five-line staff. It starts with a treble clef and a common time signature 'C'. The notes are written in a cursive style, with some letters like 'a', 'r', and 'n' appearing below the staff. The piece concludes with a large, decorative flourish.

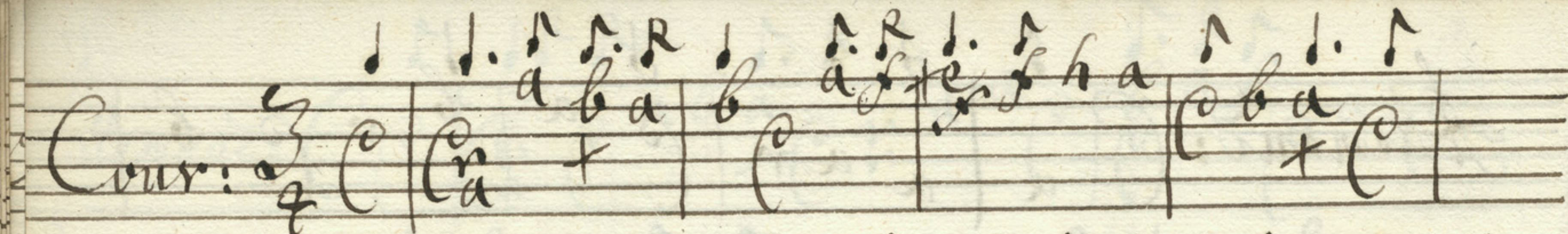


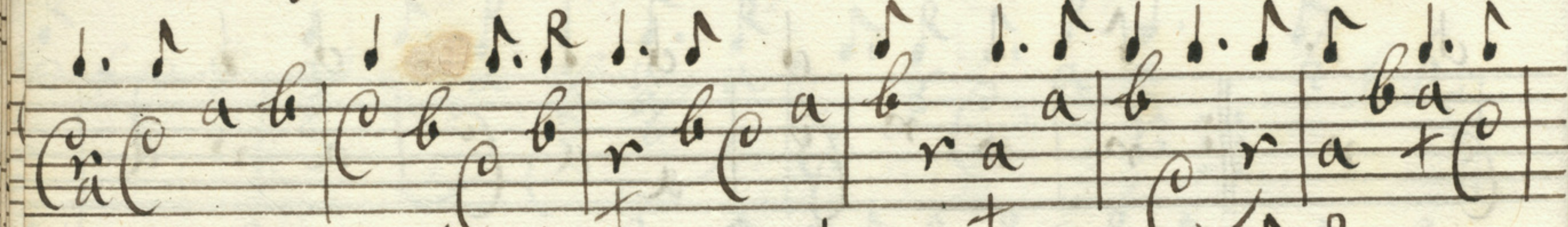
Allegretto: C a | a a r | C a | b r C b

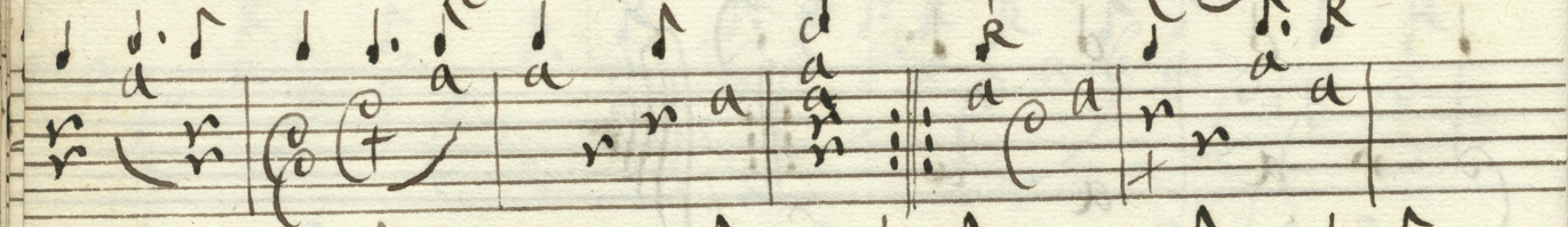
C r || r r r C a a C | a r a

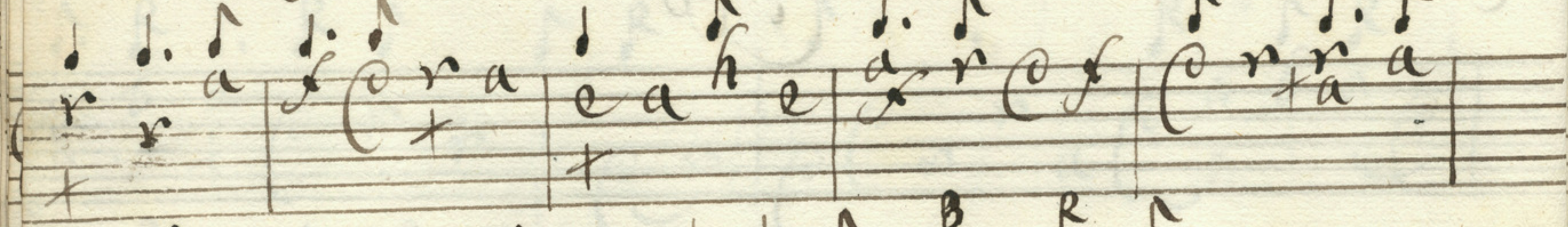
C r a | a a

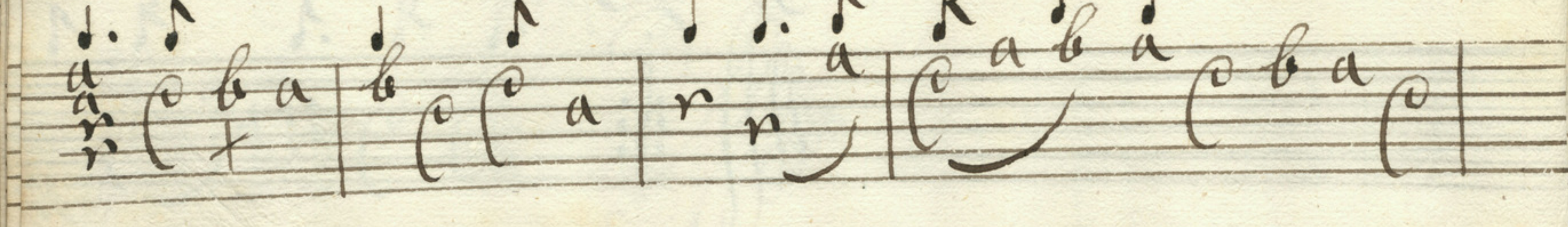


Cour: 









Handwritten musical score on a page numbered 15. The score consists of eight staves of music. The notation includes various note values (quarter, eighth, and sixteenth notes), rests, and clefs. The lyrics are written in a cursive script below the notes. The piece concludes with a double bar line and a decorative flourish.

Lyrics (from top to bottom):

a b | a a n | a n | a
 Cour: a | a | r a n | r | a | r
 r | a n | n r | r n r
 e a n | a n r | a r a
 r a | a r | a a

Sarabanda

Handwritten musical notation for the first staff of a Sarabanda. It features a treble clef, a 3/2 time signature, and a common time signature. The melody consists of notes with stems and flags, and rests. The lyrics "Sarabanda" are written in a cursive hand below the first few notes.

Handwritten musical notation for the second staff. It continues the melody with notes and rests. The lyrics "a r e r a h e r a a f a" are written below the notes.

Handwritten musical notation for the third staff. It continues the melody with notes and rests. The lyrics "a a r a a a" are written below the notes.

Handwritten musical notation for the fourth staff. It continues the melody with notes and rests. The lyrics "r a a" are written below the notes. The staff ends with a double bar line and a decorative flourish.

Sarabanda

Handwritten musical notation on a five-line staff. The first measure contains a treble clef, a common time signature (C), and a C-clef. The melody consists of quarter notes: C, D, E, F, G, A, B. The lyrics 'e r a' are written below the notes.

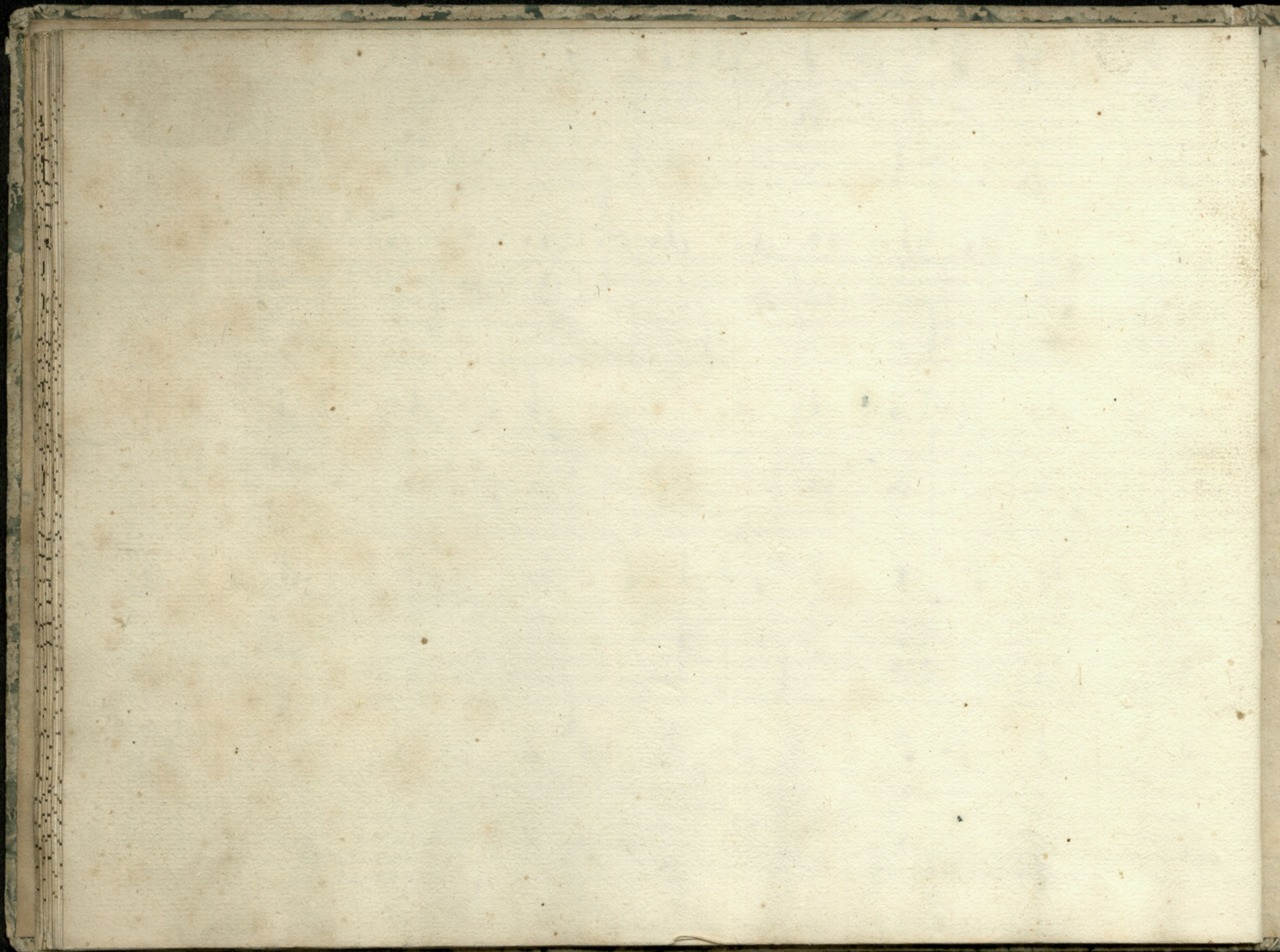
Handwritten musical notation on a five-line staff. The melody consists of quarter notes: C, D, E, F, G, A, B, C, D. The lyrics 'e a r a' are written below the notes. A double bar line with repeat dots is present after the second measure. The second system continues with quarter notes: E, A, B, C, D, E, F, G, A, B, C, D.

Handwritten musical notation on a five-line staff. The melody consists of quarter notes: C, D, E, F, G, A, B, C, D. The lyrics 'a a r a' are written below the notes. A double bar line with repeat dots is present after the second measure. The notation ends with a large, decorative flourish.

Handwritten musical score on six staves. The first staff begins with the word "Gigue." and a treble clef. The notation includes various note values (quarter, eighth, and sixteenth notes), rests, and bar lines. The music is written in a historical style, likely from the 17th or 18th century. The notes are often decorated with stems and flags. The piece concludes with a double bar line and repeat dots.

Handwritten musical score on six staves. The top staff has a treble clef and a key signature of one flat. The second staff is labeled "Gigue" and has a 3/4 time signature. The notation includes various note values, rests, and bar lines, with some sections ending in double bar lines and repeat signs.

Handwritten musical notation on a page with ten staves. The notation is extremely faint and illegible, appearing as light grey or blue ink. It consists of rhythmic symbols, possibly notes and rests, organized into measures by vertical bar lines. Some larger, circular symbols are interspersed among the staves, which could be clefs or decorative elements. The overall appearance is that of a very faded or ghostly manuscript page.



Murhardsche Bibliothek der Stadt Kassel
und Landesbibliothek

Handschrift: Israel Auk. 28

Die Benutzung dieser Handschrift wird nur unter der Voraussetzung gestattet, daß von jedem aus ihr veröffentlichten Text- oder Bildabdruck ein Belegexemplar der Handschriftenabteilung der Murhardschen und Landesbibliothek, Kassel, unentgeltlich übermittelt wird. Photographische Aufnahmen aus der Handschrift dürfen nur mit Genehmigung der besitzenden Bibliothek angefertigt werden.

Der Benutzer wird gebeten, zur Vervollständigung der vorhandenen Angaben über die Kasseler Handschriften neue Feststellungen und Hinweise der Bibliothek freundlichst mitzuteilen.

Die Benutzung der Handschrift seit 19 68

Datum	Benutzer Voller Name mit Stand und Wohnort	Ort der Benutzung	Art der Benutzung Eingesehen, verglichen, abgeschrieben, photokopiert? Welcher Teil der Hs.?
4. II. 68	Prof. Dr. W. Brühne Viro. Jöhrges	LS	RISM-Katalog
28. IV. 68	Dr. Antonia Beandorff - Engelstedt 4507 Exter	LS	eingesehen (Archiv MGG)
15.3.77	Prof. Hartwich, S.O. Göttingen, Dahlmannstr. 10	Hss. abt.	RISM-Katalog vol. B/VII, 1

411/2

