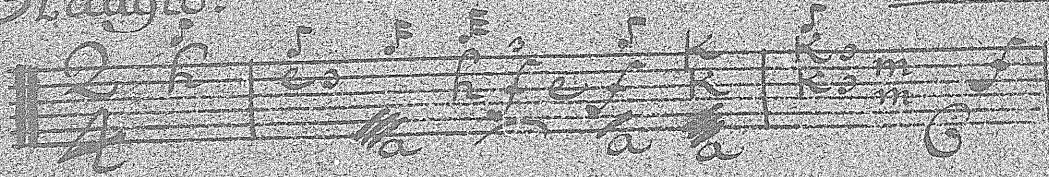


45. No 4

Adagio.

D. dur.



SONATA
Lute Solo.

Del Sigr.
Kohaut.

Lute Solo.

Adagio.

Handwritten musical notation for the first staff of a lute solo. It begins with a treble clef, a 4/4 time signature, and a key signature of one flat (B-flat). The melody starts with a half note G4, followed by quarter notes A4, Bb4, and C5. The bass line consists of whole notes: G2, Bb1, and C2. The staff concludes with a fermata over a whole note G4.

Handwritten musical notation for the second staff. The melody continues with quarter notes D5, E5, and F5, followed by a half note G5. The bass line has whole notes: D2, E2, and F2. The staff ends with a fermata over a whole note G4.

Handwritten musical notation for the third staff. The melody features quarter notes G5, A5, and Bb5, followed by a half note C6. The bass line has whole notes: G2, A2, and Bb2. The staff concludes with a fermata over a whole note G4.

Handwritten musical notation for the fourth staff. The melody starts with quarter notes D5, E5, and F5, followed by a half note G5. The bass line has whole notes: D2, E2, and F2. The staff ends with a fermata over a whole note G4.

Handwritten musical notation for the fifth staff. The melody continues with quarter notes A5, Bb5, and C6, followed by a half note D6. The bass line has whole notes: A2, Bb2, and C3. The staff concludes with a fermata over a whole note G4.

Handwritten musical notation for the sixth staff. The melody features quarter notes E6, F6, and G6, followed by a half note A6. The bass line has whole notes: E2, F2, and G2. The staff ends with a fermata over a whole note G4.

Handwritten musical notation for the seventh staff. The melody starts with quarter notes Bb6, C7, and D7, followed by a half note E7. The bass line has whole notes: Bb2, C3, and D3. The staff concludes with a fermata over a whole note G4.

Handwritten musical score on ten staves. The notation includes various note values (quarter, eighth, sixteenth notes), rests, and dynamic markings such as *f* (forte) and *mf* (mezzo-forte). The lyrics are written below the notes, consisting of a series of 'a' and 'e' characters, some with accents or diacritics. The score is organized into measures by vertical bar lines. The bottom two staves are empty, with the word 'Voti.' written in the first of these staves.

Voti.

Menuet.

Handwritten musical score for a Minuet. The piece is in 3/4 time, treble clef, and one flat (B-flat major or D minor). The notation includes notes, rests, and fingerings (numbers 1-5) written below the notes. The score consists of seven staves of music, with a repeat sign at the end of the sixth staff.

Trio.

