

Francois Couperin

## Les baricades mystérieuses



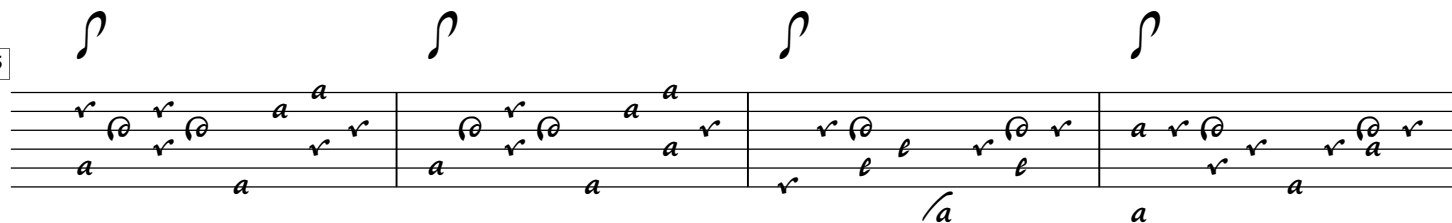
Transcriptions pour luth a 10 choeurs,  
luth baroque et guitare  
par  
Alain Veylit

# Les baricades mystérieuses

10-course in G tuning



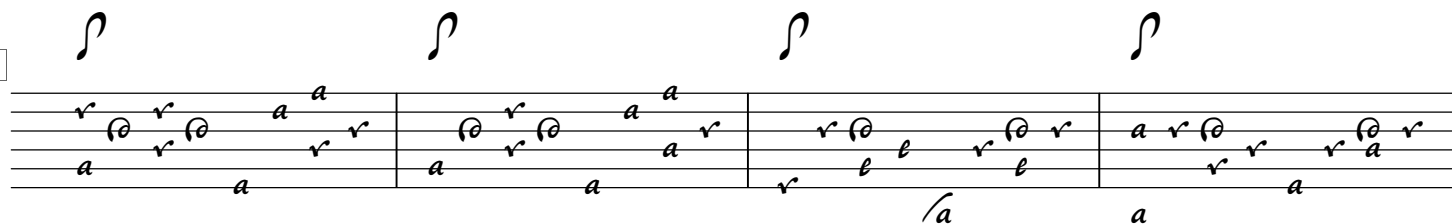
5



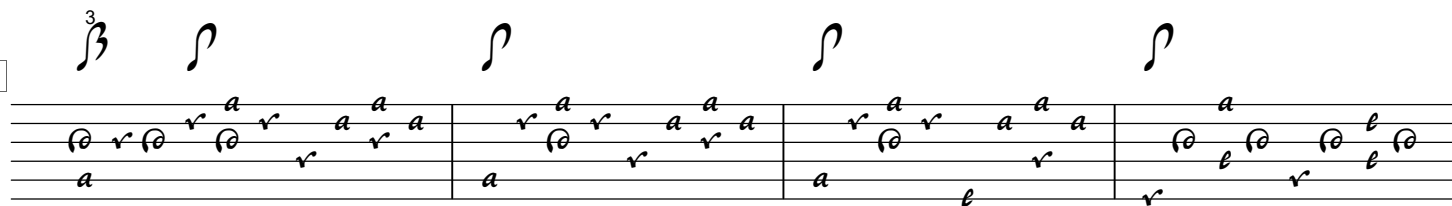
9



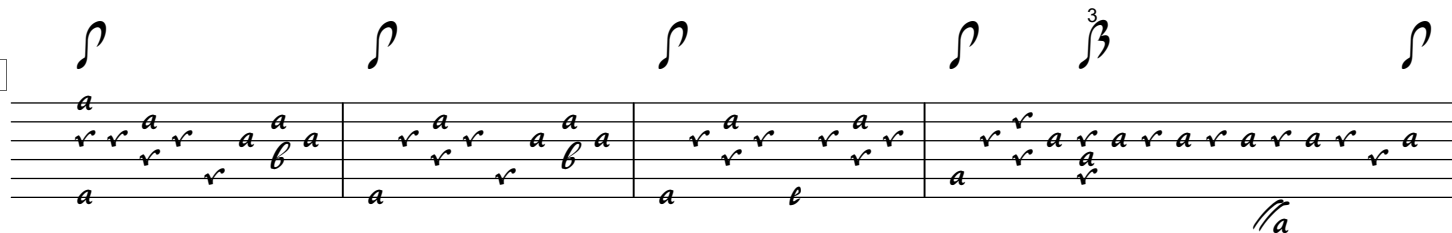
13



17



21



25



29

The Rose Tree

33

Exercise 33 is a short piece in 2/4 time, consisting of 8 measures. The melody is written in the treble clef, and the bass line is in the bass clef. The key signature has one flat (B-flat). The melody starts with a quarter note G4, followed by a quarter rest, then a quarter note A4, and a quarter note B4. The bass line starts with a quarter note G3, followed by a quarter note F3, and a quarter note E3. The piece ends with a quarter note G4 in the melody and a quarter note G3 in the bass.

37

3

2

3

2

41

45

49

Exercise 49 is a single-melody piece. It begins with a half rest, followed by a half note. The first measure contains a half note, a quarter note, and an eighth note. The second measure contains a half note, a quarter note, and an eighth note. The third measure contains a half note, a quarter note, and an eighth note. The fourth measure contains a half note, a quarter note, and an eighth note. The exercise concludes with a half note.

53

Exercise 53 is a short piece in G major, 2/4 time. It consists of four measures. The first measure has a treble staff with a quarter note G, an eighth note A, and a quarter rest, and a bass staff with a quarter note G, an eighth note F#, and a quarter rest. The second measure has a treble staff with a quarter note A, an eighth note B, and a quarter rest, and a bass staff with a quarter note A, an eighth note G, and a quarter rest. The third measure has a treble staff with a quarter note B, an eighth note A, and a quarter rest, and a bass staff with a quarter note B, an eighth note A, and a quarter rest. The fourth measure has a treble staff with a quarter note A, an eighth note G, and a quarter rest, and a bass staff with a quarter note A, an eighth note F#, and a quarter rest.

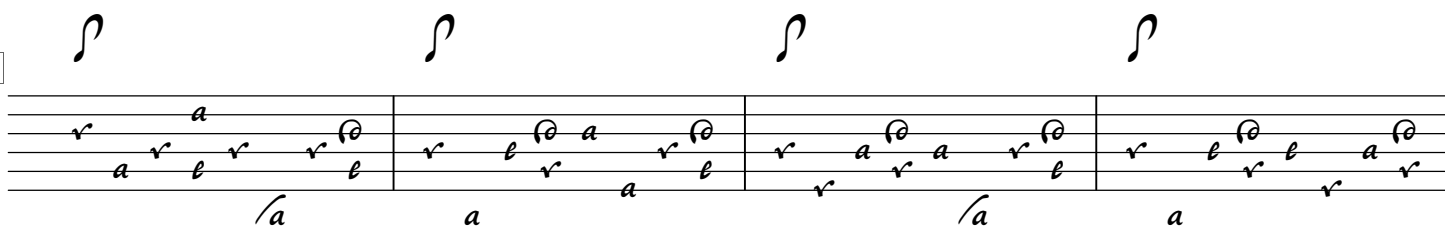
57



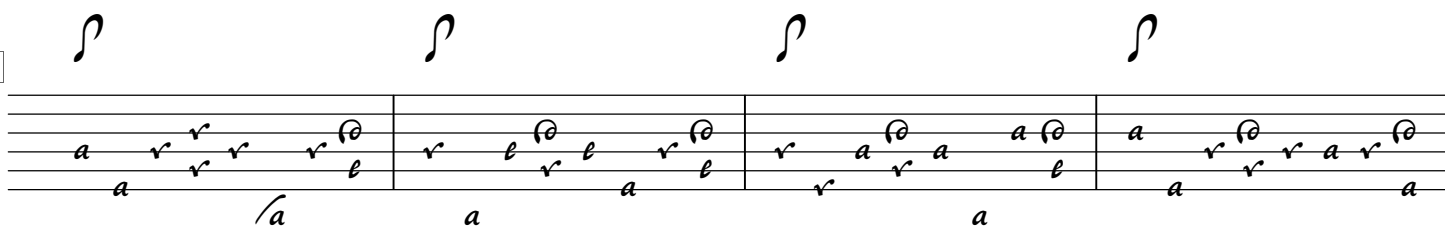
61



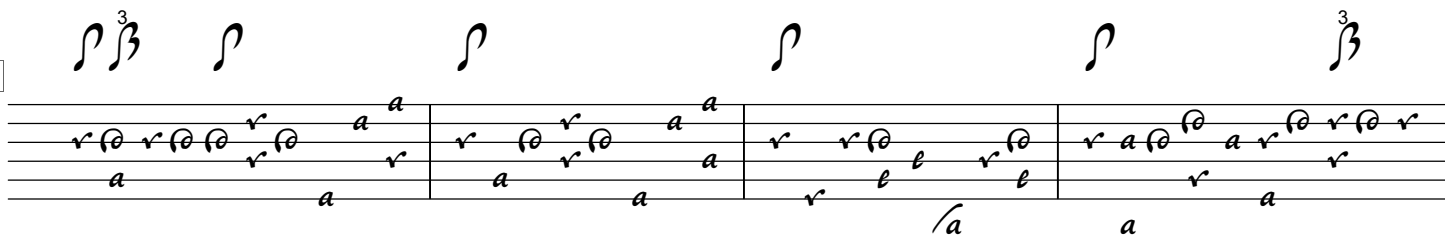
65



69



73



77



## Baroque lute in Dm tuning

[illegible]

5

The fifth exercise consists of two staves. The treble staff contains a sequence of notes: a quarter rest, an eighth note, a quarter note, an eighth note, a quarter note, and a quarter rest. The bass staff contains a sequence of notes: a quarter rest, a quarter note, an eighth note, a quarter note, an eighth note, and a quarter note. The exercise is marked with a '5' in a box at the beginning.

9

The 9th measure of the 'Fugue for Anna Magdalena' is shown. It consists of a treble and a bass staff. Above the treble staff, there are rhythmic markings: a triplet of eighth notes, a quarter note, a half note, a quarter note, a half note, a quarter note, a half note, and a triplet of eighth notes. The treble staff contains a series of eighth and quarter notes, with some notes beamed together. The bass staff contains a series of eighth and quarter notes, with some notes beamed together. There are also some slurs and accents over the notes.

13

The musical notation for exercise 13 consists of a four-measure piece. The first measure contains a treble staff with a half note 'r' and a quarter note 'a', and a bass staff with a half note 'r'. The second measure contains a treble staff with a half note 'r' and a quarter note 'a', and a bass staff with a half note 'r'. The third measure contains a treble staff with a half note 'r' and a quarter note 'a', and a bass staff with a half note 'r'. The fourth measure contains a treble staff with a half note 'r' and a quarter note 'a', and a bass staff with a half note 'r'. The notation includes various rhythmic values and articulation marks.

17

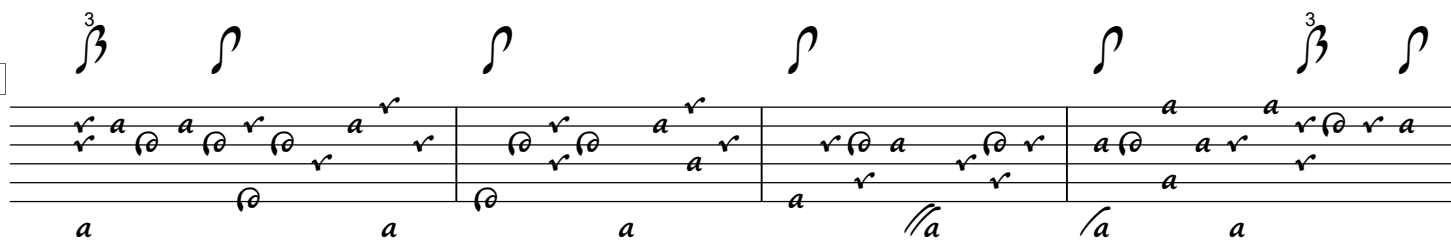
Exercise 17 is a short piece in 3/4 time, consisting of four measures. The melody is written in the treble clef, and the bass line is in the bass clef. The first measure contains a triplet of eighth notes (G4, A4, B4) followed by a quarter rest. The second measure has a quarter note (G4), a quarter rest, and a quarter note (B4). The third measure features a quarter note (A4), a quarter rest, and a quarter note (G4). The fourth measure has a quarter note (F#4), a quarter rest, and a quarter note (E4). The bass line consists of a single eighth note (G3) in the first measure, followed by a quarter rest in the second, third, and fourth measures.

[illegible]

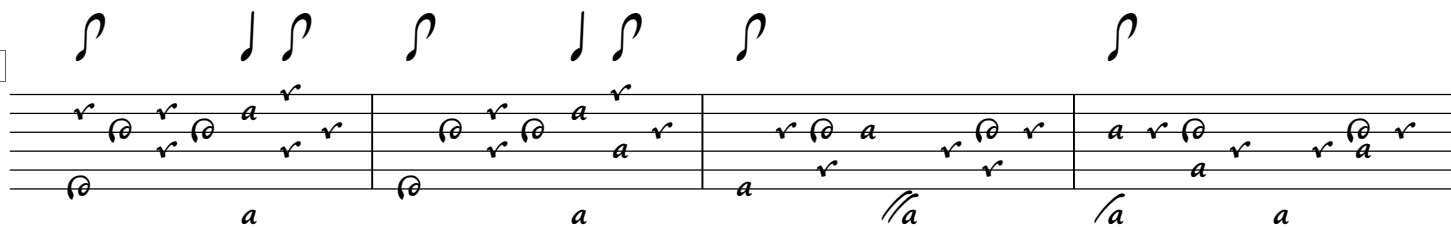
25

Handwritten musical notation for a 4-measure piece. The notation is written on a three-line staff. Above the staff are four quarter notes. The first measure contains eighth notes 'r', 'r', 'a', 'r', 'r', 'a', 'r' and a whole note 'a'. The second measure contains eighth notes 'r', 'r', 'a', 'r', 'r', 'a', 'r' and a whole note 'a'. The third measure contains eighth notes 'r', 'r', 'a', 'r', 'r', 'a', 'r' and a whole note 'a'. The fourth measure contains eighth notes 'r', 'r', 'a', 'r', 'r', 'a', 'r' and a whole note 'a'. The piece ends with a double bar line.

29



33



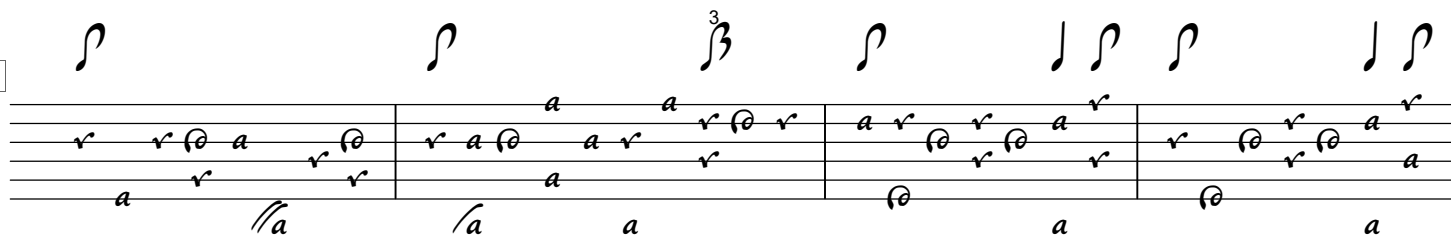
37



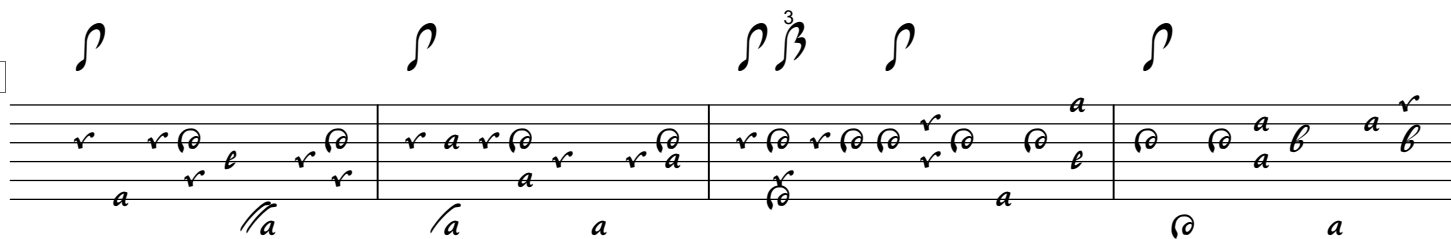
41



45



49



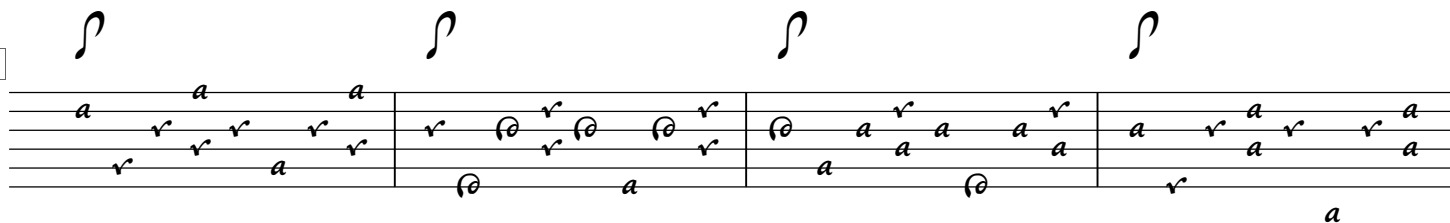
53



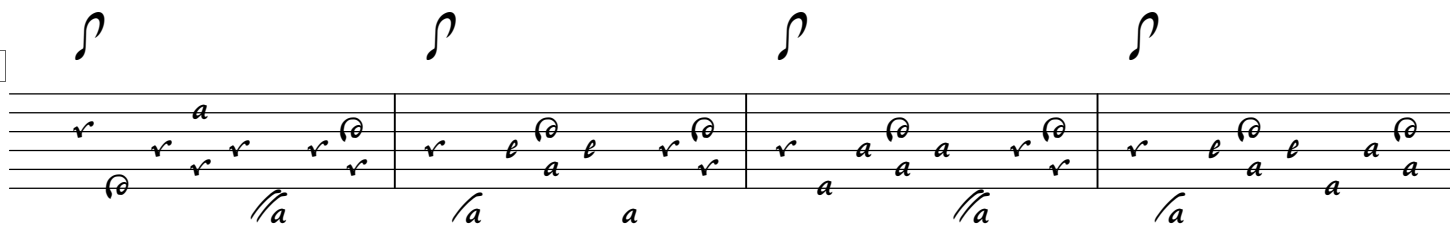
57



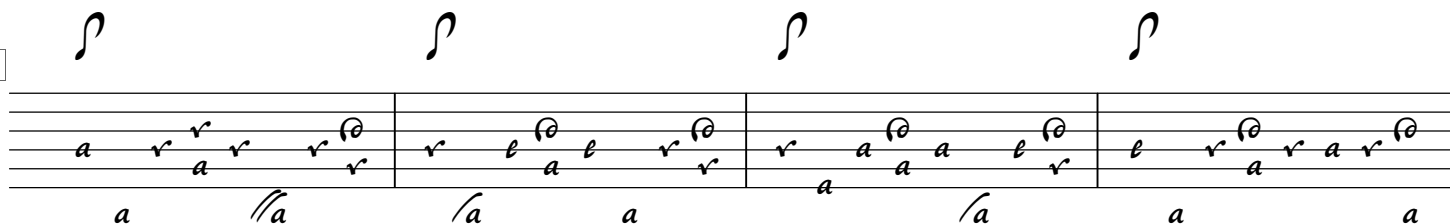
61



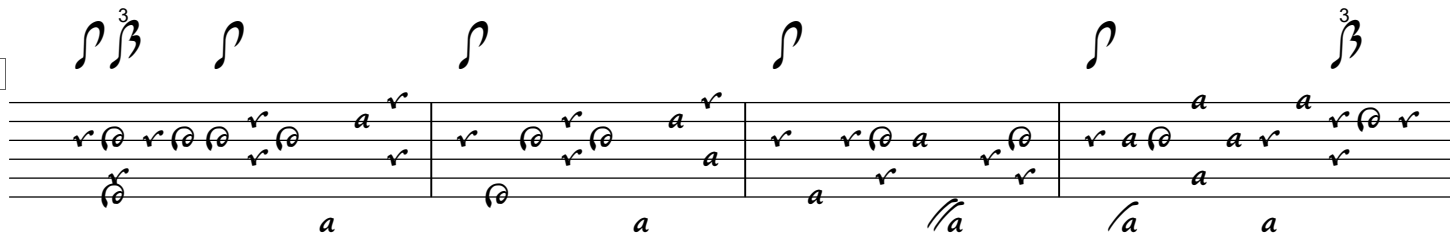
65



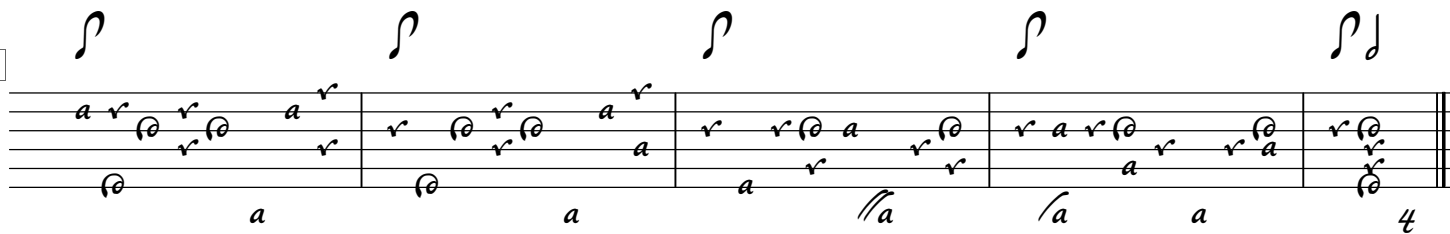
69



73

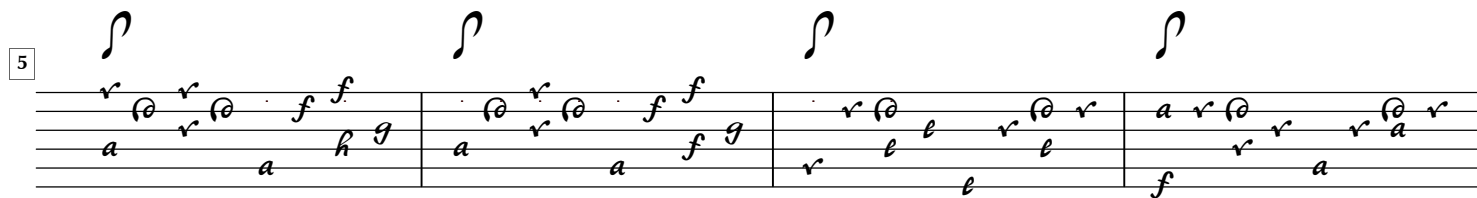


77



# Les baricades mystérieuses

Guitar tuning : Bass in D





29



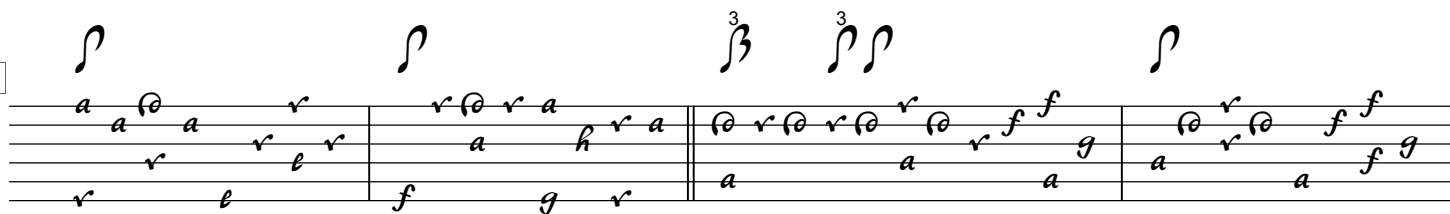
33



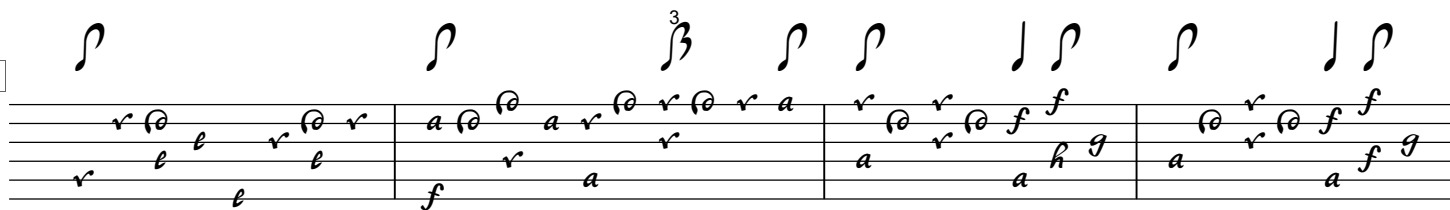
37



41



45



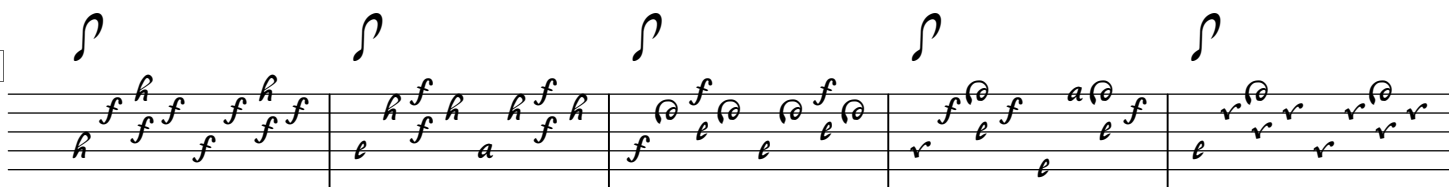
49



53



57



62



67



72



78



