

Dimmi amor...

LORI, Arcangelo del Leuto (1615-79)

6

10

13

16

System 16: Treble clef, key signature of one flat. The system consists of three staves. The top staff contains a melody with eighth and quarter notes. The middle staff contains a complex accompaniment with many beamed sixteenth notes and rests, including dynamic markings like *f* and *l*. The bottom staff contains a simple bass line with quarter notes.

20

System 20: Treble clef, key signature of one flat. The system consists of three staves. The top staff continues the melody. The middle staff features more complex rhythmic patterns with dynamic markings like *f* and *l*. The bottom staff continues the bass line.

25

System 25: Treble clef, key signature of one flat. The system consists of three staves. The top staff has a melody with some beamed eighth notes. The middle staff has a complex accompaniment with dynamic markings like *f* and *l*. The bottom staff continues the bass line.

29

System 29: Treble clef, key signature of one flat. The system consists of three staves. The top staff has a melody that includes a triplet of eighth notes. The middle staff has a complex accompaniment with dynamic markings like *f* and *l*. The bottom staff continues the bass line, ending with a double bar line and a repeat sign.

33

Measures 33-35 of a musical score. The system consists of three staves: a treble staff, a middle staff, and a bass staff. The treble staff contains a melody with notes G4, A4, B4, C5, B4, A4, G4, and a final triplet of G4, A4, B4. The middle staff contains a complex accompaniment with many beamed sixteenth notes and rests, including dynamic markings *f* and *r*. The bass staff contains a simple accompaniment with notes G3, A3, B3, and C4.

36

Measures 36-38 of a musical score. The system consists of three staves. The treble staff contains a melody with notes G4, A4, B4, C5, B4, A4, G4, and a final triplet of G4, A4, B4. The middle staff contains a complex accompaniment with many beamed sixteenth notes and rests, including dynamic markings *f* and *r*. The bass staff contains a simple accompaniment with notes G3, A3, B3, and C4.

39

Measures 39-42 of a musical score. The system consists of three staves. The treble staff contains a melody with notes G4, A4, B4, C5, B4, A4, G4, and a final triplet of G4, A4, B4. The middle staff contains a complex accompaniment with many beamed sixteenth notes and rests, including dynamic markings *f* and *r*. The bass staff contains a simple accompaniment with notes G3, A3, B3, and C4.

43

Measures 43-46 of a musical score. The system consists of three staves. The treble staff contains a melody with notes G4, A4, B4, C5, B4, A4, G4, and a final triplet of G4, A4, B4. The middle staff contains a complex accompaniment with many beamed sixteenth notes and rests, including dynamic markings *f* and *r*. The bass staff contains a simple accompaniment with notes G3, A3, B3, and C4.

47

47

48

49

50

51

52

52

53

54

55

56

Dimmi amor...

LORI, Arcangelo del Leuto (1615-79)

7

13

18

24

29

34

39

45

51

Dimmi amor...

LORI, Arcangelo del Leuto (1615-79)

Dimmi amor...

7

11

15

19

24

30

35

Musical score for a single melodic line. The score is written on a five-line staff. It features various musical notations including notes, rests, and dynamic markings. The score is divided into measures, with some measures containing multiple notes or rests. The key signature is one flat (B-flat). The tempo is marked 'a' (allegro). The score is numbered 7, 11, 15, 19, 24, 30, and 35, indicating the measure numbers. The score ends with a double bar line and a repeat sign.

39

43

48

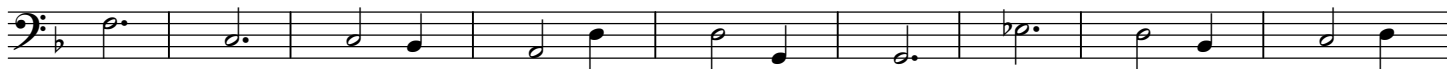
54

Dimmi amor...

LORI, Arcangelo del Leuto (1615-79)



10



11



12



13



14



15

