

Dimmi amor...

LORI, Arcangelo del Leuto (1615-79)

6

10

13

- p. 1 -

16

System 16: Treble clef, key of B-flat major. The system consists of three staves. The top staff has a melody starting on G4, moving to A4, Bb4, and then a descending line. The middle staff contains complex figured bass notation with various accidentals and dynamics like *f* and *r*. The bottom staff has a simple bass line starting on Bb3.

20

System 20: Treble clef, key of B-flat major. The system consists of three staves. The top staff continues the melody with some rests. The middle staff features more complex figured bass notation with dynamics like *f* and *r*. The bottom staff continues the bass line.

25

System 25: Treble clef, key of B-flat major. The system consists of three staves. The top staff has a melody with some sixteenth-note passages. The middle staff contains figured bass notation with dynamics like *f* and *l*. The bottom staff continues the bass line.

29

System 29: Treble clef, key of B-flat major. The system consists of three staves. The top staff has a melody ending with a sixteenth-note run. The middle staff contains figured bass notation with dynamics like *f* and *a*. The bottom staff continues the bass line, ending with a double bar line and a repeat sign.

33

Measures 33-35 of a musical score. The system consists of three staves: a treble staff, a middle staff, and a bass staff. The treble staff contains a melody with notes G4, A4, B4, C5, B4, A4, G4, and a final triplet of G4, A4, B4. The middle staff contains a complex accompaniment with many beamed sixteenth notes and rests, including dynamic markings *f* and *r*. The bass staff contains a simple accompaniment with notes G3, A3, B3, C4, B3, A3, G3, and a final half note G3.

36

Measures 36-38 of a musical score. The system consists of three staves. The treble staff contains a melody with notes G4, A4, B4, C5, B4, A4, G4, and a final triplet of G4, A4, B4. The middle staff contains a complex accompaniment with many beamed sixteenth notes and rests, including dynamic markings *f* and *r*. The bass staff contains a simple accompaniment with notes G3, A3, B3, C4, B3, A3, G3, and a final half note G3.

39

Measures 39-42 of a musical score. The system consists of three staves. The treble staff contains a melody with notes G4, A4, B4, C5, B4, A4, G4, and a final triplet of G4, A4, B4. The middle staff contains a complex accompaniment with many beamed sixteenth notes and rests, including dynamic markings *f* and *r*. The bass staff contains a simple accompaniment with notes G3, A3, B3, C4, B3, A3, G3, and a final half note G3.

43

Measures 43-46 of a musical score. The system consists of three staves. The treble staff contains a melody with notes G4, A4, B4, C5, B4, A4, G4, and a final triplet of G4, A4, B4. The middle staff contains a complex accompaniment with many beamed sixteenth notes and rests, including dynamic markings *f* and *r*. The bass staff contains a simple accompaniment with notes G3, A3, B3, C4, B3, A3, G3, and a final half note G3.

47

47

52

52

Dimmi amor...

LORI, Arcangelo del Leuto (1615-79)

7

13

18

24

29

34

39

45

51

Dimmi amor...

LORI, Arcangelo del Leuto (1615-79)

Dimmi amor...

7

11

15

19

24

30

35

Musical score for "Dimmi amor..." by LORI, Arcangelo del Leuto (1615-79). The score is written for a single melodic line on a five-line staff. It features various musical notations including notes, rests, and dynamic markings (f, a). The score is divided into measures, with some measures containing multiple notes or rests. The key signature is one flat (B-flat). The tempo is marked 'a' (allegro). The score is numbered 7, 11, 15, 19, 24, 30, and 35, indicating measure numbers. The score ends with a double bar line and a repeat sign.

39

43

48

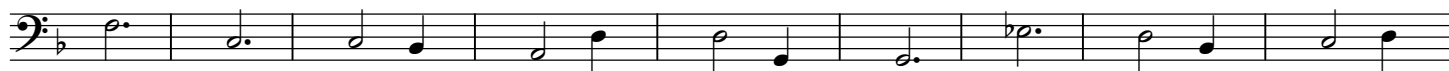
54

Dimmi amor...

LORI, Arcangelo del Leuto (1615-79)



10



11



12



13



14



15

